



THEATRE & DANCE

theatre.indiana.edu



MUSIC AND LYRICS BY GEORGE AND IRA GERSHWIN | BOOK BY KEN LUDWIG
MUSICAL DIRECTION BY TERRY LABOLT | CHOREOGRAPHED BY DJ GRAY
CO-DIRECTED BY ANSLEY VALENTINE AND DJ GRAY

RUTH N. HALLS THEATRE



INDIANA UNIVERSITY
BICENTENNIAL

200 YEARS

IU Theatre & Dance wishes to acknowledge and honor the Miami, Delaware, Potawatomi, and Shawnee people, on whose ancestral homelands and resources Indiana University was built.

LIVE PERFORMANCE

The mission of the Department of Theatre, Drama, and Contemporary Dance is to advance the art, scholarship, and appreciation of theatre and dance and its place in society. We pursue this mission collectively and as individuals through theatrical productions, scholarship and publication, presentation of our work in national and international venues, formal instruction, and individual mentoring.

The Department of Theatre, Drama, and Contemporary Dance is accredited by the National Association of Schools of Theatre and is a member of the University/Resident Theatre Association and United States Institute for Theatre Technology.

LIVING IMPACT



 **THEATRE & DANCE**

PRESENTS

CRAZY FOR YOU®

Music and Lyrics by
George Gershwin and Ira Gershwin
Book by Ken Ludwig

Co Conception by Ken Ludwig and Mike Ockrent

Inspired by Material by Guy Bolton and John McGowan

Originally produced on Broadway by Roger Horchow and Elizabeth Williams

Original Broadway Choreography by Susan Stroman

MUSICAL DIRECTOR	Terry LaBolt
CHOREOGRAPHED BY	DJ Gray
CO-DIRECTORS	Ansley Valentine* and DJ Gray
SCENIC DESIGNER	Christopher Mueller
COSTUME DESIGNER	Rachel Saylor
LIGHTING DESIGNER	Joshua Wroblewski
SOUND DESIGNER	Macy Klovile
STAGE MANAGER	Lexi Duddleson

The worldwide copyrights in the music of George and Ira Gershwin® for this presentation are licensed by the Gershwin Family.

GERSHWIN is a registered trademark and service mark of Gershwin Enterprises.

CRAZY FOR YOU is a registered trademark and service mark of CRAZY FOR YOU Enterprises.

CRAZY FOR YOU®, THE NEW GERSHWIN® MUSICAL is presented by arrangement with TAMS-WITMARK
www.tamswitmark.com



*This Director is a member of the Stage Directors and Choreographers Society, a national theatrical labor union, and Actors' Equity Association, the Union of Professional Actors and Stage Managers in the United States.

The video and/or audio recording of this production is strictly prohibited.
Do not use cell phones, pagers, or other devices that may emit sound or light.

RUTH N. HALLS THEATRE | APRIL 17-18, 21-25, 2020

Cast

BOBBY CHILD Broderick O'Neal

POLLY BAKER Larkin Reilly

IRENE ROTH Nina Donville

BELA ZANGLER Michael Bayler

MOTHER Justin Smusz

LANK HAWKINS Luke Major

EUGENE Ethan St. Germain

PATRICIA Cassia Scagnoli

TESS Casey Lamont

PATSY Casey McCoy

EVERETT BAKER Josh Carter

COWBOY TRIO - MOOSE Max Rezek-Tewinkle

COWBOY TRIO - SAM Sam Sanderson

COWBOY TRIO - MINGO Kyle Mason

ORCHESTRA

Matt Roehrich
Piccolo/Flute

Phillip Ponella
Clarinet/Tenor Sax

Quinn Sternberg
Bass

Greg Niemi
Drums

Noah Marcus
Percussion

Jeremy Gussin
Piano 2

Terry LaBolt
Conductor/Piano 1

ENSEMBLE

BETSY Catherine Barker

SHEILA Allison Demers

BEN Ben Dow

ELAINE Amanda Fawell

JIMMY Kabir Gandhi

VERA Maya McQueen

CUSTUS Henry Miller

GEORGE George Mulder

HARRY Dominic Pagliaro

MITZI Lisa Podulka

MARGIE Antoinette Pompe Van Meerdevort

JUNIOR Justin Smusz

SUSIE Katie Scarlett Swaney

LOUISE Caroline Santiago Turner

BILLY Taylor Ward

PETE Michael Winner

SWINGS

MOTHER Ethan St. Germain

EVERETT/LANK Dan Keller

**FEMALE ENSEMBLE/
PATRICIA** Natalie Stahl

This play is presented with one 15-minute intermission.

Scenes

ACT ONE

1. WINGS & STAGE OF ZANGLER'S BROADWAY THEATER.
Just before a Follies finale.
2. STREET IN FRONT OF THE ZANGLER THEATER, NEW YORK.
Five minutes later.
3. MAIN STREET, DEADROCK, NEVADA. Morning.
4. INSIDE LANK'S SALOON. DEADROCK, NEVADA.
Immediately following.
5. MAIN STREET & DESERT. DEADROCK, NEVADA. As evening falls.
6. STAGE OF THE GAIETY THEATER. DEADROCK, NEVADA.
Immediately following.
7. MAIN STREET, DEADROCK, NEVADA. Morning, three days later.
8. LOBBY OF THE GAIETY THEATER. Mid-morning, two weeks later.
9. STAGE OF THE GAIETY THEATER. Immediately following.
10. BACKSTAGE OF THE GAIETY THEATER.
Saturday night, about 7 o'clock.
11. MAIN STREET, DEADROCK, NEVADA. Immediately following.

ACT TWO

1. INSIDE LANK'S SALOON. Fifteen minutes later.
2. LANK'S SALOON. The next morning, about 10 o'clock.
3. STAGE OF THE GAIETY THEATER. Ten minutes later.
4. STREET IN FRONT OF THE ZANGLER THEATER, NEW YORK.
Six weeks later.
5. MAIN STREET, DEADROCK, NEVADA. Three days later.

Musical Numbers

ACT ONE

- Overture* – Orchestra
K-r-a-z-y For You – Bobby
Can't Be Bothered Now – Bobby and Women
Bidin' My Time – Moose and Men
Things Are Looking Up – Bobby
Could You Use Me? – Bobby and Polly
Shall We Dance – Bobby and Polly
The "Follies" Girls Arrive In Nevada – Ensemble
Someone To Watch Over Me – Polly
Slap That Bass – Bobby (as Zangler), Moose, and Company
Embraceable You – Polly & Bobby (as Zangler)
Tonight's The Night – Ensemble
I Got Rhythm – Polly & Ensemble

ACT TWO

- The Real American Folk Song* – Ensemble
What Causes That? – Bobby and Zangler
Naughty Baby – Irene, Lank, and Men
Stiff Upper Lip – Eugene, Patricia, Bobby, Polly, and Ensemble
They Can't Take That Away From Me – Bobby
But Not For Me – Polly
Nice Work If You Can Get It – Bobby and Women
French Reprise: *Bidin' My Time* – Moose, Pete, and Wyatt
Reprise: *Things Are Looking Up* – Everett
Finale – Company

Production staff

Assistant Stage Managers

Danielle Bergman
Jorie Miller
Sophie Reynolds

Assistant Lighting Designers

Megan Branham
Russell Long

Assistant Costume Designer

Meredith Buckley

Dance Captain

Casey Lamont

Dress Rehearsal Assistant

Victoria Wiley

Department Speech, Voice, and Dialect Coach

Nancy Lipschultz

Production Manager

Trish Hausmann

Department Technical Director

Tien-Yin Sun

Production Technical Director

I. Christopher Berg

M.F.A. Technical Director

Matt Hapeman

M.F.A. Assistant Technical Directors

Marie Pipinich
Ben Ramos

Department Props Master and Scenic Artist Supervisor

Dan Tracy

Props Master

Christopher Mueller

Scenic Charge Artist

Rachel Burke

Scenic Studio Employees

Rachel Burke
Joshua Carter
Taylor Furman
Amanda Gardin
Spencer Gjerde
Matt Hapeman
Carrie Hurst
Rachel Johnson
Hannah Keeler
Kyle Mason
Daniel Meeks
Christopher Mueller
Valeriya Negviga
Dominic Pagliaro
Melanie Patterson
Marie Pipinich
Samantha Rahn
Ben Ramos
Emma Rodes
Margaretha Setiawan

Scenic Run Crew

Danielle McKnight

Costume Studio Supervisor

Robbie Stanton

Director of Dance Costumes & Department Cutter/Draper

Anne Sorenson

Production Cutter/Draper

Ellis Greer
Elizabeth Licata

Costume Studio Assistants

Erin Barnett
Madi Bell
Grace Branam
Meaghan E. Carlo
Elizabeth Grace Davis
Justin Gannaway
Ellis Greer
Addie Helfers
Elizabeth Licata

Melanie Patterson
Rachel Saylor
Hannah Schulthise

Wardrobe Supervisors

Erin Barnett
Justin Gannaway

Wardrobe Crew

Madi Bell
Allison Marshall
Jenna Sears
Lalo Vera
Drew Waller
Cole Winston

Lighting Supervisor

Betsy Smith

Production Master Electrician

Naomi S. Gold

Assistant Master Electrician

Lee Anne Meeks

Lighting Board Operator

Mitchell Black

Spot Operators

Oriana Ogle
Cameron Pelton
Carolynn Stouder

Electrics Studio Employees

Megan Branham
Elijah Carpenter
Ian Dutler
Naomi S. Gold
Russell Long
Lee Anne Meeks
Mitch Ost
MacKenzie Van Tassel

Sound Studio Employees

Ben Ballmer
Anna Fagin
Macy Klovile
Grace Leckey

Message from the chair



Greetings!

Welcome to the 2019–2020 season of the Department of Theatre, Drama, and Contemporary Dance here in the beautiful Lee

Norvelle Theatre and Drama Center at Indiana University!

Theatre and dance are a vital part of human expression and convey the values, hopes, fears and dreams of our world through the stories of individuals, families, and communities—however we choose to define them.

I find such joy in being part of a community of scholars, artists, and makers, here in our department and in the larger university and Bloomington communities. This season of theatre, dance, and musicals engages important ideas and addresses issues of love, hope, memory, loss, addiction, and revenge. Even classic plays such as *Hamlet* and *The Servant of Two Masters* will compel us to consider universal themes and view our world through a contemporary lens.

Our department productions are a direct application of the research, craft, art, and techniques studied and explored in our theatre and dance classrooms here on the IUB campus. Everything you will experience at this performance—from the front of house, performers, choreography, and playwriting to the design, construction, backstage crews, dramaturgy, and

management—are produced by and with our students. The number of students, faculty, and staff required to mount just one production is tremendous, and after seventeen years on our IU faculty I continue to be awestruck and proud of our work. We come together as a professional model of collaboration and artistic vision to achieve the high production value you will experience at each performance.

You as an audience member have a direct impact on the study of performance and the training experience of our students. We hope that you enjoy your time with us, and we invite you to read our department mission statement included in this program. If you would like to learn more about our department, please visit us at theatre.indiana.edu.

We are grateful for the generous support of our many donors and Associate Producers whose gifts have made possible unique production opportunities and student scholarships. To support our department and our students with a financial gift, or if you are considering joining the unwavering champions in our Theatre Circle, look for the Alumni & Giving tab on our website, theatre.indiana.edu.

Many thanks for joining us!

Linda Pisano

Chair, Department of Theatre, Drama, and Contemporary Dance
Professor of Costume Design



The Department Production Technical Director and Costume Shop Supervisor are members of the International Alliance of Theatrical Stage Employees, 618 or 893.

Administrative staff

Chairperson

Linda Pisano

Associate Chairperson

Selene Carter

Financial Operations Manager/ Budget Manager/Manager of Business Affairs/Office Manager

Cindi Severance

Operations Manager

James Barrow

Project Manager

Laura Judson

Department Dramaturg

Madison Colquette

House Manager

Sharai Bohannon

Audience Development Staff

Ellise Chase
J. Maria Dalmasso
Jayne Deely
Brynn Jones
Daniel Meeks

Assistant House Managers

Aleia Clark
Katelyn Connor
Onyea Cummings
Lexi Duddleson
Sierra Halpin
Dan Keller
Caroline Santiago-Turner
MacKenzie Van Tassel
Taylor Ward
Victoria Wiley

THIS PRODUCTION IS SPONSORED IN PART BY:

Becky Hrisomalos
Joan Olcott
Associate Producers

Cyndi and Dale Nelson
Judy Shettleroe
Kate Kroll
Kathryn and Barry Brown
Partner Associate Producers

Cast



CATHERINE BARKER
(Betsy)

is a freshman B.F.A. in Musical Theatre. She is a graduate of Interlochen Arts Academy in Interlochen, Michigan. For IU Independent Projects: *Tick, Tick...*

Boom!(Karessa), *The Hunchback of Notre Dame* (Ensemble). For Cardinal Stage Company: *Peter Pan* (Warrior), *West Side Story* (Jet Girl). Catherine is from Bloomington, IN.



MICHAEL BAYLER
(Bela Zangler)

is a third-year M.F.A. student in Acting with a B.A. in Theatre from the University of Missouri. For IU Theatre: *Ascendant* (Lee), *Hamlet* (Hamlet), *Peter and*

the Starcatcher (Black Stache), *Julius Caesar* (Brutus), *The Goat or, Who is Sylvia?* (Ross), *Only Child* (Pat). For IU Summer Theatre: *Our Town* (George Gibbs), *The Foreigner* (Rev. David Lee), *Little Shop of Horrors* (Puppeteer/Wino #1). For Cardinal Stage: *The Great Gatsby* (Jay Gatsby), *The Glass Menagerie* (Jim O'Connor). For MU Theatre: *Death of a Salesman* (Willy Loman), *Rosencrantz and Guildenstern are Dead* (Guildenstern), *Endgame* (Hamm), *Romeo & Juliet* (Tybalt). Michael is from Big Rock, IL.



JOSH CARTER
(Everett Baker)

is a senior B.F.A. Musical Theatre major and Cinema and Media Studies minor. Favorite Bloomington productions include: A-rab in *West Side Story*

(Cardinal Stage), Georg in *Spring Awakening* (Ivy Tech Theatre), Tribe member in *Jesus Christ Superstar* (IU Theatre), and Alex/Business Student in The Media School's Themester project recreating three episodes of *The Twilight Zone*. Josh is a member of the Theatre & Dance Student Advisory Board.



ALLISON DEMERS
(Sheila)

is a junior earning a B.F.A. in Musical Theatre. Past credits include, for IU Theatre: *Vinegar Tom* (Woman, Co-Choreographer), *Titus Andronicus* (Emilia).

For Summer Theatre of New Canaan: *The Light Princess* (Gravitron, u/s Princess), *Pippin* (u/s high priestess), *Singin' in the Rain* (ensemble). Allison is from Norwalk, CT.



NINA DONVILLE
(Irene Roth)

(Ninako) is a senior B.F.A. Musical Theater major minoring in Arts Management. She most recently performed in IU Summer Theatre's *Little Shop of Horrors*

(Audrey). For IU Theatre: *Wonderful Town* (Ensemble), and *Pippin* (Catherine). For IU Summer Theater: *Our Town* (Emily), and *The 25th Annual Putnam County Spelling Bee* (Marcy Park). Other credits include: *Nice Nails* (Jasmine) with IU Mainstage; *Front Page Flo* (Carmencita) with BPP; *Jasper in Deadland* (Agnes/Gretchen) and *The Great American Trailer Park Musical* (Pippi) with University Players; and *West Side Story* with Cardinal Stage Company. Nina is from Palos Verdes, CA.



BEN DOW
(Ben)

is a junior B.F.A. Musical Theatre major with a minor in Marketing through the Kelley School of Business. For Timber Lake Playhouse: *Into the Woods* (Jack);

Man of La Mancha (Padre); *Mamma Mia!* (Ensemble); *The Little Mermaid* (Flotsem). Indiana University: *Big Fish* (Edward Bloom), *Wonderful Town* (Frank Lippencott); *City of Angels* (Ensemble). For Cardinal Stage: *God Bless You, Mr. Rosewater* (Delbert Peach). For University Players: *Next to Normal* (Dan); *Jasper in Deadland* (Mr. Lethe); *The Golden Palace*

Cabaret. Independent Projects: *140* (David); *Emergency: A Medical Musical* (Dr. Hill). For Ivy Tech: *Spring Awakening* (Ernst). Ben is from Shorewood, IL.



AMANDA FAWELL
(Elaine)

is a freshman at IU, currently pursuing her B.F.A. In Musical Theatre. This is her IU Theatre debut. For IU Independent Projects:

The Hunchback of Notre Dame (Roma/ Statue/ Townsperson), *Tick, Tick...Boom* (Ensemble). Other: *Mary Poppins* (Mary Poppins), *Spring Awakening* (Ilse), *Mamma Mia!* (Donna Sheridan), *Cabaret* (Frenchie/ Gorilla). Awards: MET Musical Theatre Awards Winner, 2019 Jimmy Awards Nominee. Amanda is from Framingham, MA.



KABIR GANDHI
(Jimmy)

is a freshman at Indiana University. This is his first production for IU Theatre. Independent Projects: *The Hunchback of Notre Dame* (Clopin Trouillefou). Community

Theatre: *Beauty and the Beast* (Cogsworth), *Into the Woods* (Wolf), and *Newsies!* (Finch). He is from Johns Creek, GA.



DAN KELLER
(Swing: Everett, Lank)

is a current sophomore in the Musical Theatre program with a minor in Business. Past IU credits include: *Big Fish* (Young Will), *Titus Andronicus* (Young Lucius) and

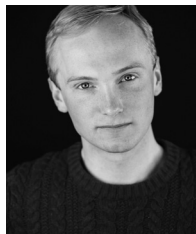
Waiting for Godot (Boy). Dan is from Aurora, IL.



CASEY LAMONT
(Tess; Dance Captain)

is a senior B.F.A. Musical Theatre major. For IU Theatre: *City of Angels* (Gabby/Bobbi), *Pippin* (Ensemble, Manson Trio, Leading Player u/s), *Urinetown* (Soupy Sue,

Pennywise u/s), *Wonderful Town* (Ensemble, Assistant Choreographer, Ms. Wade u/s) & *Jesus Christ Superstar*. For Utah Festival Opera & Musical Theater: *West Side Story* (Minnie, Assistant Choreographer), *Newsies!* (Newsie/ Ensemble), and *Mary Poppins*. IU Summer Theatre: *Dames at Sea* (Joan). University Players: *Next to Normal* (Diana Goodman) and *American Idiot* (Tunny). Bloomington Playwrights Project: *Front Page Flo*. New York Theatre: *The Wave* (Shawna) by Or Matias, at Playwrights Horizons' Robert Moss Theatre. Casey is from McKinney, TX.



LUKE MAJOR
(Lank Hawkins)

is a senior studying Musical Theatre at Indiana University. For IU Theatre: *Pippin* (King Charles), *Peter and the Starcatcher* (Alf), *City of Angels* (Werner/Luther),

Wonderful Town (Tour Guide), *The Drowsy Chaperone* (U/s Feldzieg), *Jesus Chris Superstar* (Tribe/Roman). For Cardinal Stage: *West Side Story* (Snowboy), *Peter Pan* (Cookson). Independent projects: *The Hunchback of Notre Dame* (St. Aphrodisus). For Kings Island Amusement Park: *Country Flashback!* (Singer/ Dancer) and *Grand Carnivale* (King's Dancer). Luke is from Columbus, IN.



KYLE MASON
(Mingo)

is a junior in the B.F.A. Musical Theatre program, minoring in Arts Management. For IUST: *Little Shop of Horrors* (Assistant Director), *Stardust Road*

(Assistant to the Director). University Players: *Next to Normal* (Director). Onstage credits include IU Theatre's *Pippin* and *City of Angels*, and University Players' *Jasper in Deadland*. He has also served as the Social & Membership Director for the University Players Board this school year. Kyle is from Rochester Hills, MI.



CASEY MCCOY
(Patsy)

is a senior B.F.A. Musical Theatre major with a minor in Arts Management. For IU Theatre she has been seen in *City of Angels* (Girl), *The Drowsy*

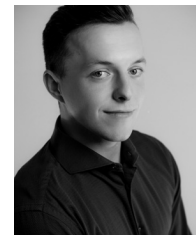
Chaperone (Ensemble), and *Urinetown* (Swing). She has also been seen around Bloomington in *The 25th Annual Putnam County Spelling Bee* (Logainne Schwartz and Grubenierre) and *Our Town* (Rebecca Gibbs) with IU Summer Theatre, *West Side Story* (Anybodys) with Cardinal Stage Company, *Front Page Flo* (Ensemble) with Bloomington Playwrights Project, and *She Kills Monsters* and *The Great American Trailer Park* (Pickles) with University Players. Casey is from Malvern, PA.



MAYA McQUEEN
(Vera)

is a junior B.F.A. Musical Theatre major. For IU Theatre: *Vinegar Tom* (Woman), *Wonderful Town* (Female Swing), *The Resistible Rise of Arturo Ui* (Young Dogsborough).

IU Independent Projects: *The Rocky Horror Show* (Janet). Other credits include: *If I Forget* (Ellen Understudy) at Barrington Stage Co, *Into the Woods* (Little Red) at Leavenworth Summer Theatre, *The Pajama Game* (Poopsie) at the 5th Avenue Theatre, and *Billy Elliot* (female swing) at Village Theatre. Maya is from Seattle, WA.



HENRY MILLER
(Custus)

is a senior B.F.A. Musical Theatre major. Along with this, he is pursuing a Business minor through the Kelley School of Business. For IU Theatre: *Wonderful*

Town (Ensemble/Wreck US), *Pippin* (Lewis/ Pippin US), *City of Angels* (Dancer), *Urinetown* (Billy Boy Bill), *The Drowsy Chaperone* (Swing/ Pit Singer), *Jesus Christ Superstar* (Tribe/Annas US). For IU Summer Theater: *Dames At Sea* (Lucky). For Bloomington Playwrights Project: *Front Page Flo* (Ensemble/Young Brett). For NY Theatre: *The Wave* (Ensemble) by Or Matias. Henry was most recently seen as a Dancer/ Singer at Cedar Point in *Beach Blanket Beagle*. Henry is from Louisville KY.



GEORGE MULDER
(George)

is a junior Musical Theatre B.F.A. student. For IU Theatre: *Only Child* (The Prince), *Wonderful Town* (Ensemble Swing), *City of Angels* (Buddy's Nephew), *Peter and the Starcatcher*

(Captain Scott). IU Independent Projects: *The Rocky Horror Show* (Phantom Bass). University Players: *Jasper in Deadland* (Ensemble). He spent this past summer as a Dancer/Singer at Valleyfair Amusement Park. Cardinal Stage Company: Ensemble in Disney's *Newsies!*. George is from Eden Prairie, MN.



BRODERICK O'NEAL
(Bobby Child)

is a senior B.F.A. Musical Theatre major at IU. For IU Theatre: *Pippin* (Player, Lewis u/s), *Urinetown* (Tiny Tom/ Dr. Billeaux), *City of Angels* (Big Six/Cop),

The Drowsy Chaperone (Robert Martin u/s, Ensemble Swing), and *Jesus Christ Superstar* (Guard). University Players: *Next to Normal* (Gabe). Regional Theatre: *Newsies* (Romeo), *Mary Poppins* (Bert u/s), *West Side Story* (Riff), *Dames at Sea* (Dick, Assistant Choreographer), *Front Page Flo* (Frank), *Mamma Mia* (Pepper), and the Hoagy Carmichael premiere musical, *Stardust Road*. Broderick is from South Bend, IN.



DOMINIC PAGLIARO
(Harry)

is a senior B.F.A. majoring in Musical Theatre and minoring in Musical Theatre Composition. For IU Mainstage: *City of Angels* (Buddy), *Urinetown* (Cladwell),

Resistible Rise of Arturo Ui (James Greenwool); Cardinal Stage: *Newsies!* (Delancey/Newsie), *West Side Story* (Juano); Woodstock Playhouse: *Mamma Mia!* (Sam), *Deathtrap* (Sidney Bruhl), *Newsies!* (Pulitzer), *Hair* (Tribe); Clinton Area Showboat: *Oliver!* (Bill Sikes), *Jesus Christ Superstar* (Caiaphas), *The Little Mermaid* (Triton), *Cabaret* (Max, u/s Cliff). Dom is from Sandy Hook, CT. www.dompagliaro.com



LISA PODULKA
(Mitzi)

is a senior B.F.A. Musical Theatre major and Spanish minor at IU from Ithaca, NY. Summer: four shows at the Interlakes Summer Theatre in Meredith, NH: *Ragtime* (Evelyn Nesbit), *Saturday Night Fever* (Annette), *Mamma Mia!*, and *Funny Girl*. For IU Theatre: *Big Fish* (Mermaid, et al.) *Peter and the Starcatcher* (Molly) and *City of Angels* (Carla/Alaura). Other credits: *Beauty...Beast* (Babette), Cardinal Stage; *Stardust Road* and *Dames at Sea* (Ruby), IUST; *The Last Night of Ballyhoo* (Sunny), Jewish Theatre of Bloomington; *The Oregon Trail* (Mary Anne), Bloomington Playwrights Project; and *Spider's Web* (Pippa), Cortland Repertory Theatre.



ANTOINETTE POMPE VAN MEERDERVORT
(Margie)

is a freshman majoring in Vocal Performance at the Jacobs School of Music and minoring in Theatre & Drama. For IU Theatre: *Hamlet* (Ensemble).

Other credit of hers include *The Amish Project* (Carol Stuckey), *You Can't Take It with You* (Penny Sycamore), and more. Some of her Shakespeare credits include *Much Ado About Nothing* and *Comedy of Errors* through Chicago Youth Shakespeare and Citadel Theatre. Antoinette is from Lake Forest, IL.



LARKIN REILLY
(Polly Baker)

Larkin Reilly is a junior B.F.A. Musical Theatre student, minoring in liberal arts management and business. For IU Theatre: *Pippin* (Ensemble), *The*

Resistible Rise of Arturo Ui (Bowl/Inna), and *City of Angels* (Ensemble Swing). Other: *A Chorus Line* (Bebe) for Theatre In The Park, *Heathers: The Musical* (Heather McNamara) for Faust Theatre, *White Christmas* (Judy) for Music Theatre Kansas City. This past summer, Larkin studied as a musical theatre dance performance student through Steps On Broadway's intern program. Larkin is from Leavenworth, KS.



MAX REZEK-TEWINKLE
(Moose)

is a sophomore B.F.A. Musical Theatre Major. For Indiana University: *Big Fish* (Dr. Bennet/Edward u/s). For University Players: *Next to Normal* (Henry).

For Another Door Theatre Project: *A Chorus Line* (Mark/Greg). Independent Projects: *Emergency: A Medical Musical* (Harold). Other: *Rumors* (Lenny), *Once Upon A Mattress* (Jester), and *Footloose* (Reverend Shaw). Max is from Wilmette, IL.



SAM SANDERSON
(Sam)

is a senior earning a B.F.A. in Musical Theatre and a minor in Musical Theatre History. For Indiana University: *Big Fish* (Will Bloom), *Wonderful Town* (Speedy

Valenti), *Pippin* (Ensemble/Charles Cover), *City of Angels* (Angel City Quartet), *Urinetown* (Mr. McQueen/Cladwell Cover), *The Drowsy Chaperone* (Ensemble), *Jesus Christ Superstar* (The Tribe). For IU Summer Theatre: *Stardust Road* (Soloist). For Cardinal Stage Company: *The Musical Adventures of Flat Stanley* (Arthur/Others), *West Side Story* (Pepe). For Bloomington Playwrights Project: *Front Page Flo* (Emcee/Ensemble). For Lyric Arts Main Street Stage: *Into the Woods* (Jack). Workshops: *The Wave* by Or Matias (Ensemble). Sam is from Minneapolis, MN.



CASSIA SCAGNOLI
(Patricia)

is a junior B.F.A. Musical Theatre major. For IU Theatre: *Wonderful Town* (Ruth Sherwood), *Pippin* (Berthe), *Three Sisters* (Musician). For IU Summer Theatre:

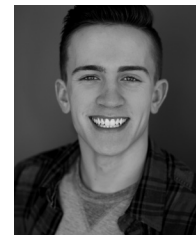
Sticks and Stones (Winnie). For Cardinal Stage Company: *Peter Pan* (Tiger Lily/Liza). For University Players: *Jasper in Deadland* (Lil'Lu/Ensemble). Other: *Midsummer Night's Dream* (Puck), *Anything Goes* (Reno Sweeny), *Beauty and the Beast* (Belle), and *Urinetown* (Penelope Pennywise). TV: *The Friday Zone* (Co-Host). She recently did an internship with Indiana Repertory Theatre in their youth workshops. Cassia is from Logansport, IN.



ETHAN ST. GERMAIN
(Eugene, Swing: Mother)

is a junior Musical Theatre major at IU. For IU: *City Of Angels* (Munoz U/s, ensemble), *Julius Caesar* (Cinna the Poet), *Three Sisters* (Officer). For

IUST: *Little Shop of Horrors* (Seymour). For IU Independent Projects: *The Rocky Horror Show* (Stage Manager /Light Board Operator), *The Arboretum* (Asst. Director, co-librettist). He is from Aurora, IL.



JUSTIN SMUSZ
(Mother)

is ready to conga back onto the IU Mainstage. Credits: IU Mainstage: *City of Angels* (Peter, Ens.) IU Summer Theatre: *25th Annual...Spelling Bee*

(Coneybear), *Our Town* (Joe/Si), University Players: *Next to Normal* (Music Director), Ivy Tech: *Spring Awakening* (Hanschen). Awards: NSAL Robinson Merit Award, 2017 Jimmy Award Nominee (Broadway), IHSMTA Best Actor 2017. @justinsmz justinsmusz.com



NATALIE STAHL
(Swing: Female Ensemble, Patricia)

is a sophomore B.F.A. Musical Theatre major. For IU Independent Projects: *The Hunchback of Notre Dame* (Ensemble). Community

theatre credits include: *Footloose* (Ensemble, Dancer), *Legally Blonde* (Kate), *Beauty and The Beast* (Silly Girl). Natalie is from Arlington Heights, IL.



KATIE SCARLETT SWANEY
(Susie)

is a senior at Indiana University majoring in Musical Theatre and minoring in Arts Management. For IU Theatre: *City of Angels*

(Angel City Four: Soprano), *The Resistible Rise of Arturo Ui* (Clark), *The Drowsy Chaperone* (Pit Singer). For IU Summer Theatre: *The*

25th Annual Putnam County Spelling Bee (Olive), *Stardust Road* (Woman #1), *Our Town* (Ensemble). For Bloomington Playwright's Project: *Tuning In* (Shannon). For Cardinal Stage Company: *Newsies* (Katherine). Katie is from Greenwood, IN.



CAROLINE SANTIAGO TURNER
(Louise)

is a sophomore B.F.A. Musical Theatre major and Arts Management minor. Credits – IU Theatre: *Big Fish* (Ensemble);

Barbecue (Barbara). UP: *Next to Normal* (Natalie). Other: *Violet* (Violet), *Peter and the Starcatcher* (Molly), *Bye Bye Birdie* (Rose), *Carrie: The Musical* (Margaret). Arts for Life Best Performance Awards: Best Youth Musical Performance Award (2018); Best Youth Lead Actress Award (2017). St. Louis High School Musical Theatre Awards: Nominee, Outstanding Lead Actress (2018). She is from St. Louis, MO.



TAYLOR WARD
(Billy)

is a junior B.F.A. student in Musical Theatre. For IU Theatre: *Big Fish* (Amos/Ensemble), *Wonderful Town* (Ensemble/Frank Cover), *City of Angels* (Shoeshine/Gaines). For

University Players: *Triassic Park* (Velociraptor of Faith). For Brown County Playhouse: *Believe! The Magic of Christmas* (Featured Performer) and *Blithe Spirit* (Ghost/Butler). Other: *Guys and Dolls* (Nathan Detroit), *Mary Poppins* (Robertson Ay), and *The Music Man* (Prof. Harold Hill). Taylor is from Greenwood, IN.



MICHAEL WINNER
(Pete)

is a current sophomore earning his B.F.A. in Musical Theatre. For IU Theatre: *Big Fish* (Ensemble). Independent projects: *The Rocky Horror Show*

(Frank-N-Furter).

Artistic team



DANIELLE BERGMAN
(Assistant Stage Manager)

is a junior studying Stage Management with minors in Theatre & Drama and Psychology. At IU she stage managed *Water By The*

Spoonful, *Haus of Mirth*, and *New Moves Dance Concert*. Assistant stage managed IU theatre's productions of *City of Angels*, and *The Heiress*. She was the Production Management Assistant for IU Summer Theatre 2019. Also, she was on Run Crew and Change-Over Crew for IUST 2019. She was on Wardrobe Crew for *Vinegar Tom*. Was the Light board Op for Junior Dance, and Sound board op for *Shifting Landscapes*. She stage managed University Player's production of *The Golden Palace Cabaret*, interned as part of the stage management team at The Alliance Theatre in Atlanta, Georgia, for two years she was on the stage management production team of The Georgia High School Musical Theatre Awards which were live broadcasted on GPB, and was involved in 15 productions throughout her four years at Johns Creek High School. Danielle is from Johns Creek, GA.



MEGAN BRANHAM
(Assistant Lighting Designer)

is a third-year M.F.A. lighting design student. She graduated with a B.A. in Theatre from the University of South Carolina with

an emphasis in lighting design. Her previous design credits for IU Theatre include: *Vinegar Tom*, *By the Bog of Cats*, *Nice Nails*, *Bodies of Light* (The Gorgeous Nothings) and *The Senior Choreography Showcase*.



MEREDITH BUCKLEY
(Assistant Costume Designer)

is graduating this spring from IU and will begin her graduate studies in the fall at the University of Cincinnati. She has spent the past three years

focused on costume design, millinery, stage make-up, and the circus arts. She has worked as a stitcher in the IU Costume Shop (*Little Shop of Horrors*) and as a wardrobe dresser (*Little Shop of Horrors* and *Little Women*). Meredith is a freelance designer and has designed Ed color guard costumes for multiple high schools and independent groups. Meredith has been an Undergraduate TA in the IU Fashion Design program the past two years, as well as a co-costume designer for an independent student film (*His Master's Voice*). She is the recipient of the IU Provost's Award for Undergraduate Research & Creative Activity (2019), the Fashion Scholarship Fund (2019), and the Indiana University Bill Blass Scholarship (2018).



RACHEL BURKE
(Scenic Charge Artist)

is a first year graduate student pursuing her Masters of Fine Arts degree in Scenic Design. Recent design credits include *Uncommon*

Women and Others (Salem State University), *The Lion, the Witch, and the Wardrobe* (Beverly High School), *Mary Poppins Jr.* (YMCA North Shore), *Elf Jr.* (YMCA North Shore), *A Free Man of Color* (Salem State University), *Almost, Maine* (Student Theater Ensemble), *The Seagull* (Salem State University), and *A Small Death in a Big Country* (Salem State University). Awards: Kennedy Center American College Theatre Festival Region 1 scenic design nominee (2019).



LEXI DUDDLESON
(Stage Manager)

is a senior studying Theatre & Drama with a concentration in Stage Management. Some of her previous credits with the department include *Wonderful Town*,

Making Spaces, *The Goat or, Who Is Sylvia?*, *The Foreigner*, *Our Town*, *At First Sight: Nice Nails*, and *Three Sisters*. In addition to stage management, Lexi also works on the stage crew for the Musical Arts Center. She is from South Bend, IN.



DJ GRAY
(Co-Director, Choreographer)

is a performer and choreographer with Broadway and Off-Broadway credits. On Broadway, she was the Associate Choreographer

for the Tony Award winning *25th Annual Putnam County Spelling Bee*, Tony nominated *Xanadu*, (also staging the National Tours and commercial engagements), and *Sondheim on Sondheim*. Regional credits include Barrington Stage, North Shore, Northern Stage, Florida Studio Theatre, Candlelight Theatre, Moonlight Stage productions, McCoy/Rigby Entertainment, and Musical Theatre West. For TV, DJ choreographed for Stephen Colbert's Christmas Special, and Colbert's "Dance Party", and for NBC, *The Year Without a Santa Claus*, as well as several episodes of "The New Electric Company".



ELLIS GREER
(Cutter/Draper)

is a third-year student in the M.F.A. Costume Technology program. Draping at IU: *Hamlet*, *Titus Andronicus*, *Barbecue*, *City of Angels*. Ellis has worked

at regional theatre and opera companies across the country: Utah Shakespeare Festival, Washington National Opera, Shakespeare Theatre Company, Santa Fe Opera, Glimmerglass Opera. She began her professional costume career ten years ago at the Clarence Brown Theatre in her hometown of Knoxville, TN.



NAOMI S. GOLD
(Master Electrician)

is a third-year M.F.A. lighting design candidate from Aurora, Colorado; graduating in 2017 with a B.A. in lighting design and technology from the University of Northern

Colorado. For IU: *Tiger Beat*, *Big Fish*, *Only Child*, *Barbecue*, *New Moves*, *Bodies of Light & Three Sisters* (Lighting Designer). Other lighting design credits include: *Major Barbara*, *Spring Awakening*, *Orchesography Dance Concert*, *The Importance of Being Earnest* (UNCo); *Cabaret* (The Aurora Fox Theatre). Other professional work includes; 4Wall Entertainment Internship (Sales Intern), Disney Professional Internship (Entertainment Technician).



MATT HAPEMAN
(Technical Director)

is a third-year M.F.A. Technical Director from Archdale, North Carolina. For IU Theatre: *Ascendant* (Technical Director), *Hamlet* (Assistant Technical

Director), *Big Fish* (Master Carpenter), *Bodies of Light* (Technical Director), *City of Angels* (Assistant Technical Director). For UNCW Theatre: *Boeing, Boeing* (Technical Director).



MACY KLOVILLE
(Sound Designer)

is a senior at Indiana University creating her own major in Sound Design. For IU Theatre: Design: *By the Bog of Cats*, *Three Sisters* and *Nice Nails*;

Other: *Urinetown*, (Audio Engineer). For Cardinal Stage Company: *Fun Home* (Audio Engineer) and *The Christians* (Co-Sound Designer). For Jewish Theatre of Bloomington, she has sound designed *The Last Night of Ballyhoo* and *Church and State*. Macy served as Audio Engineer for Bloomington Playwrights' Project: *The Enlightenment of Percival von Schmootz* (designer), *SPUN: A Brother/Sister Rock Musical* and IU Summer Theatre's premiere musical *Stardust Road*. Macy is from Memphis, TN.



TERRY LaBOLT
(Musical Director)

is celebrating his 10th year at Indiana University. His career as a Broadway conductor flourished in the 1980s with shows such as *42nd Street*, *Hello,*

Dolly! (with Carol Channing), *George M.* (with Joel Grey), and *Sugar Babies* (with Ann Miller and Mickey Rooney). He is co-author of *The Wonder Years—the Musical* which enjoyed success Off-Broadway and in Los Angeles in the 1980's. Endeavors at the keyboard include *The Fantasticks* (original Off-Broadway production) and tough touring shows such as *The Phantom of the Opera*, *Evita*, *Aida* and most currently *Mamma Mia*. He performed the area premiere of Keith Emerson's Piano Concerto #1 with the Kentucky Symphony Orchestra in 2001. In addition he was the music director of musical theatre for the University of Cincinnati's College-Conservatory of Music for more than ten years, conducting and supervising over 30 productions there.



ELIZABETH LICATA
(Cutter/Draper)

is a second-year graduate student in Costume Technology. For IU Theatre, she was a Cutter/Draper for *Shifting Landscapes* and wardrobe supervisor

on *The Heiress*. Previously she worked in the costume shop at the Chicago Shakespeare Theater and Williamstown Theater Festival. Elizabeth is originally from Chicago, IL.



RUSSELL LONG
(Assistant Lighting Designer)

is excited to be continuing his design work as a graduate student at IU. Russell has previously studied at NAU and PCC in Arizona

where he designed and worked on *Peter and the Starcatcher*, *Secret Garden*, and *Mousetrap*. Russell has worked as the Resident Designer for Spotlight Youth Productions for ten years, where he has designed *Aladdin Jr.*, *Peter Pan Jr.*, and *Mulan Jr.* Russell has worked for Quogue Junior

Theatre Troupe, Peaks Productions, Vail Ballet, and Arizona Theatre Company.



LEE ANNE MEEKS
(Assistant Master Electrician)

is a first-year Lighting Design M.F.A. candidate. For IU Theatre:

Ascendant (Lighting Designer), *Big Fish* (Assistant Lighting

Designer). She moved here from Atlanta, having served as master electrician for Serenbe Playhouse. In Atlanta, she has worked as a lighting designer for Serenbe, Found Stages, and Shakespeare on Draught; and as a design assistant at Synchronicity Theatre, Catalyst Arts, and the Atlanta Opera. With an A.B. in Drama from Vassar College, she brands herself as a collaborative theatermaker.



JORIE MILLER
(Assistant Stage Manager)

is a sophomore pursuing Stage Management with a minor in Arts Management. For IU Theatre: *Shifting Landscapes*, *Junior*

Dance: Hatched (Stage Manager), *Wonderful Town* (Assistant Stage Manager). For University Players: *Triassic Park* (Stage Manager), *Slip* (Stage Manager). In addition to IU Theatre, this is Jorie's first year as Production Manager for University Players. In the summer, Jorie works as an intern at her local theatre, Memorial Opera House. Jorie is from Valparaiso, IN.



CHRISTOPHER MUELLER
(Scenic and Props Designer)

is a third-year M.F.A. Scenic Design candidate. He was the Props Master at IU Summer Theatre for two summers. Chris

is from Portland, OR, and graduated from the University of Idaho with his B.F.A. in Scene Design and Technical Direction in 2011. Chris has worked across the nation at theatres including Flat Rock Playhouse, Idaho Repertory Theatre, Theatre West, Oregon Shakespeare Festival, and more. For more information, visit his website at chrismuellerdesigns.com.



MARIE PIPINICH
(Assistant Technical Director)

completed her undergraduate degree at University of Northern Colorado in Theatre Design and Technology and is now pursuing her

graduate degree in Theatre Technology here at Indiana University. As someone who loves to work with their hands, be creative, and get messy, Marie was drawn to the technical side of theatre. Over the last few years, Marie has had opportunities to be a technical director, an assistant stage manager, a scenic painter, a rail operator, a carpenter, a master electrician and a wardrobe head. Select credits as Technical Director include *Spring Awakening*, *Tribes*, *The Pillowman*, and *Midsummers Night's Dream*. Always ready for the next challenge, Marie is excited and keen for her years here at IU.



BEN RAMOS
(Assistant Technical Director)

is a second year M.F.A. candidate in Technical Direction from Chicago, Illinois. Previous IU credits include being the Technical Director for

Tiger Beat, *Water by the Spoonful*, IUST 2019 and *The Goat or, Who is Sylvia?*. Before starting at IU, Ben was the TD at Drury Lane Theatre in Oakbrook Terrace, IL.



SOPHIE REYNOLDS
(Assistant Stage Manager)

Sophie Reynolds is a junior majoring in Media with a concentration in Cinema Production and a minor in Theatre & Drama. Some previous

outside credits include *Next to Normal* (Assistant Scenic Designer), *Seussical*, *Legally Blonde*, *Grease* (Assistant Stage Manager), and *The Crucible* (Scenic Designer). Sophie is from Columbus, IN.



RACHEL SAYLOR
(Costume Designer)

is a second-year M.F.A. student in costume design. For Indiana Repertory Theatre: *The Little Choo Choo That Thinks She Can*.

For IU Theatre: *Shifting*

Landscapes, *Water by the Spoonful*, *Vinegar Tom*. For IUST: *Little Shop of Horrors*. *Fool for Love* for Cumberland Theatre, and *Man of La Mancha* for Student Summer Stock of Williamsport. Rachel has also worked as assistant costume designer on *Candide* for Des Moines Metro Opera, and *Giulio Cesare* for Jacobs School of Music. Rachel is from Davidsville, Pennsylvania.



ANSLEY VALENTINE
(Co-Director)

is a professional director for the theatre and musical theatre and a proud member of Actors' Equity Association and the Stage Directors and Choreographers Society

(SDC). Ansley is a graduate of the Arts Midwest Minorities in Arts Administration Fellowship. His many awards include a Kennedy Center Gold Medallion for his efforts to promote college and university theatre across the country. Ansley holds an M.F.A. in Directing from IU.



VICTORIA WILEY
(Dress Rehearsal Assistant)

is an IU Musical Theatre junior from Indianapolis, Indiana. Throughout her time so far at IU Victoria has participated in various productions

including: *Pippin* (Leading Player), *Jasper in Deadland* (Ammut), *Spring Awakening* (Thea), and the ensemble of *Wonderful Town*. For IU Summer Theatre: *Little Shop of Horrors* (Urchin).



JOSHUA WROBLEWSKI
(Lighting Designer)

Josh is the Head of Lighting at Western Illinois University and a freelance lighting designer. He is the resident lighting designer for A Public Fit in Las

Vegas, Nevada as well as with Pegasus Theatre in Chicago, Illinois. Josh has worked in many facets of the entertainment industry including concerts, dance, theatre, corporate, and academia. Some recent credits include *Lost Letters* and *Apropos of Nothing* at Bloomington Playwrights Project, *Bravo, Caruso!* at Utah Festival Opera, *Small Mouth Sounds* with A Public Fit, the *33rd Young Playwrights Festival* with Pegasus Theatre Chicago, *Pippin* and *Stupid F@#*ing Bird* at Western Illinois University just to name a few. Check out more of his work at www.jwlightingdesign.com

Faculty and staff

Chair

Linda Pisano

Erik Abbott-Main
Liz Duffy Adams
Leraldo Anzaldua
James Barrow
I. Christopher Berg
Stafford C. Berry, Jr.
Eryn Blair, *Adjunct*
Leon I. Brauner, *Emeritus*
Juliana Burrell, *Adjunct*
Alison Calhoun, *Adjunct*
Selene Carter, *Associate Chair*
Christian Claessens, *Adjunct*
Madison Colquette
Vicky Crowe, *Retired*
Lucy Dodd
Ray Fellman
Winona Lee Fletcher, *Emerita*
Sherilyn Foley, *Adjunct*
Peter Gil-Sheridan
DJ Gray
Jennifer Goodlander, *Adjunct*

Jane Goodman, *Adjunct*
Allen Hahn
Trish Hausmann
Lalah Hazelwood, *Adjunct*
Roger W. Herzel, *Emeritus*
Scott Hogsed
Andrew Hopson
Martha Jacobs, *Adjunct*
Scott Jones, *Retired*
Laura Judson
Terry LaBolt
Jenny Lale
Harriet Leve, *Visiting Scholar*
Nancy Lipschultz
Reuben Lucas
Kristen Martino
Eric Mayer-Garcia
Dale McFadden, *Emeritus*
Murray McGibbon
Jenny McKnight
Marion Bankert
Michael, *Emerita*
R. Keith Michael, *Emeritus*

Jonathan Michaelson
Heather Milam
Rachel Newbrough, *Adjunct*
Stephanie Nugent
Marilyn Norris, *Retired*
Jason Orlenko
Eleanor Owicki
Tanya Palmer
Wes Peters, *Emeritus*
George Pinney, *Emeritus*
Laura Judson
Charles Railsback, *Emeritus*
Dennis J. Reardon, *Emeritus*
Catherine A. Richards
Kenneth L. Roberson
Richard Roland
Justin Sears-Watson
Susan Seizer, *Adjunct*
Cindi Severance
Thomas Shafer, *Retired*
Robert A. Shakespeare, *Emeritus*
Elizabeth Shea

Frank Silberstein, *Emeritus*
Betsy Smith
Rakesh H. Solomon, *Emeritus*
Anne Sorenson
Robbie Stanton
Shawn Stevens, *Adjunct*
Tien-Yin Sun
Susan Swaney, *Adjunct*
Dan Tracy
Ansley Valentine
Sonia Velazquez, *Adjunct*
Ronald Wainscott, *Emeritus*
Mary Wilson
Stephen Watt, *Adjunct*
Gustave Weltsek, *Adjunct*
Roberta Wong, *Adjunct*

Department awards, fellowships, scholarships, and endowments

Bright Family Theatre, Drama, and Contemporary Dance Fund

Anne and Jim Bright

Catherine Feltus Preston Scholarship

Catherine Preston Trust
Charles R. Leinenweber

Charles Aidman Spoon River Fellowship

Betty Aidman
Charles Ogilvie Jr.

Colleen J. and W. Keith Alexander Scholarship

W. Keith Alexander

David S. Hawes Award

Betty Anne Hawes

Donnelly-Brown Fund for Theatre & Drama

Benita Gail Brown
Brian Thomas Donnelly

Dr. James F. Elrod Scholarship in Theatre & Drama

James F. Elrod

Featheringill Theatre and Drama Scholarship

Jack L. Featheringill

Fontaine Syer Directing Fellowship in Theatre

Susan Greenberg
Mary K. Nash Rusher
Henry Woronicz

Foster Harmon Graduate Scholarship in Theatre

L. Foster Harmon

Foster Harmon Undergraduate Scholarship in Theatre

L. Foster Harmon

Frank and Becky Hrisomalos Scholarship in Theatre & Drama

Becky Hrisomalos
Katy Bigge Kestner Fund
Richard and Alicia Lytle

George Pinney Musical Theatre Scholarship

Anne and Jim Bright
Paul Goldberg
P.A. Mack
Jerry and Lucy McIntosh
Marilyn Norris
Ilene and John Reid

Harlan L. Lewis Family Scholarship

Harlan L. Lewis and Doris F. Wittenburg

Harv and Connie Hegarty Theatre and Drama Production Fund

Harv and Connie Hegarty

Helen Sarah Walker Scholarship

Michael L. Walker
Baker Hughes Foundation
Cory and Margaret Baumhardt
Irwin and Lois Jacobs

Howard Jensen Endowment

Howard Jensen

Jan Chapline Scholarship

Estate of Jan Chapline

Jay Mark Scholarship in Theatre & Drama

Alvin Goldstein

Joyce and Jim Grandorf Theatre, Drama, and Contemporary Dance Fund

Joyce and Jim Grandorf

Katy Bigge Kestner Fund

Nick Kestner

Kimberly S. Hinton Memorial Scholarship in Contemporary Dance

Bridget Balint
Jennifer Gray and Alan Bradley
Madison Colquette
Angela Gast
Lois and Richard Gast
Nancy Gray McKelvey and Raymond McKelvey
Suzanne and Keith Hinton
Steve Jarosz
Laura Judson and Nikolaus Miller
Reuben Lucas
Eleanor Owicki
Amanda and William Peterson
Linda and Paul Pisano
Bret Popper
Cat Richards
Elizabeth and John Shea
Jamie and Jonathan Stuckey

**Lee and Deb Norvelle
Fellowship**

Lee and Deb Norvelle

**Lee and Deb Norvelle Visitors
Fund**

Lee and Deb Norvelle

Lee Martin Scholarship

Wydna Lee Martin, in honor
of Andrea Parris and Carlos
Anthony Camacho

**Lora C. Shiner Memorial
Scholarship**

Vernon J. and Reva P. Shiner

**Mary Ruth and David E.
Albright Fund**

Ruth and David Albright

**Murray and Sue Robinson
Scholarship**

Frederic M. and Wilhelmina S.
Robinson

**Nota Scholl McGreevey
Scholarship**

John and Nota McGreevey

**Peglow-Blessing Family
Performing Arts Scholarship**

Sue Ellen Peglow

**Ralph Collins Memorial
Lectureship**

David Collins
Dorothy Craig Collins
Wayne Craig

Richard L. Scammon Award

Bryce Broughton
Barbara Lockard-Zimmerman

Robert Preston Scholarship

Catherine Preston Trust
Charles R. Leinenweber

**Robert R. and Wilda L.
Scholarship/Fellowship**

Robert R. and Wilda L. Crosby

**Rosemary R. Schwartzel
Scholarship**

Patricia J. Redens Wrege

**Suzanne M. Collins and
Charles A. Pryor Scholarship**

Suzanne M. Collins and Charles
A. Pryor

**Theresa Anne Walker
Scholarship**

Michael L. Walker

**William Kinzer Memorial
Scholarship**

Veralyn Kinzer

Fran Snbygg Endowment

Marianne and Charles E. Snbygg
Gertrude and Seymour Alberts
Anita Aldrich Ed.D.
Anitra Bareikis
Patricia E. Biddinger
Emily Ann Bogard
Leon and Roberta Brauner
James P. Burling II
Robert E. Burton
Marcia M. Busch-Jones
Jean E. Campbell
Ann M. K. and Thomas R. Carter
Ph.D.

Orchard Close
Evelyn A. Davies Ed.D.
Deborah A. Freund Ph.D.

Robert L. Gluckstern
Janet Hamburg

Patricia Dain Haskell
William H. Hays III

Robin Herrington-Bowen

Rachel and David M. Hertz

Jo An Huff

Peter P. Jacobi

Thomas J. Kniesner Ph.D.

Rachel Lampert

Bernice A. Pescosolido Louise

Rebecca Rarick

Nancy and James W. Reeves

Edward and Sydney Regan

Robert and Sandra Reiberg

Carlos Rodriguez
Geneva B. Scriggins
Evelyn S. Turner
Allison and Thomas Walsh
Byron P. Wheeler
Mark F. Wheeler and Jan
Wheeler Ph.D.

Jason W. Stradtman Prize

Alan Airth
Byron and Kimberly Antillon
Johnston Atoll
Dawn and Paul Barrera
Ali and Robert Bartholomew
Darlene Bishop
Donna Colwell
Bruce Creamer
Donald and Patricia Crounse
Kathleen Galindo
Adelita Garza
Arlene and Martin Glassman
Diane and Frederic Hite
Lucena A. Hocking
Denis and Robin LaBonge
Anthony and Karin Lekas
Dick and Karen Lemen
Gael and Glenn Libby
Fred and Peggy Lynn
Judith and William Maisel
Sharon Merz
Marybeth and Robert
Michel

Susan Moore
Elaine Peterson
Robert Radius
Joanne and Paul Reynolds
Martha and Robert Santos
Sharon Seymour
Martin and Charlotte Stradtman
Dennis and Sharon Tase
Howard and Joan Thompson
Catherine and William Titterud
Andrew and Rena Wellman
Lynda Wicks
Audrey and Robert Windsor

Theatre Circle

Theatre Circle was founded in 1978 to encourage the study and practice of theatre arts at IU and to promote an awareness of IU Theatre throughout the community. Theatre Circle members enjoy a variety of benefits, including acknowledgment in all IU Theatre programs;

**SUSTAINING
BENEFACTORS**

*(One-time gift of \$5,000
and above)*

Benita Brown and
Brian Donnelly
Jean and Doris Creek
Connie and Harv
Hegarty
Becky and Frank*
Hrisomalos
The Lawrence W. Inlow
Foundation
Carl F. Kiehler
Sara* and Bob LeBien
Marion Bankert
Michael and
R. Keith Michael
Dr. Howard Polley
Reva* and Jack Shiner
Mr. and Mrs. Kenneth
W. Sparks
Bruce and Shannon
Storm - In Honor of
George Pinney
Bruce and Shannon
Storm - In Honor of
Tiffany Storm Ericson
Margaret and William
Yarber

**ANNUAL GIVING
2019–20**

**ASSOCIATE
PRODUCERS
(\$2,500)**

Diana and Rodger
Alexander—
By the Bog of Cats
Anne and Jim Bright—
Water by the Spoonful
Jean Cook and Bob
LeBien—
At First Sight
Connie and Harv
Hegarty—
*The Servant of Two
Masters*
Carolyn Bailey and H.
Jeffrey Davis—
*The Servant of Two
Masters*
Becky Hrisomalos—

Crazy For You
Joan Olcott—*Crazy
For You*

**PARTNER ASSOCIATE
PRODUCERS
(\$1,250)**

Ruth Albright—*Big Fish*
Jo and Steve Ham—*Big
Fish*
Marlin Howard—*Water
by the
Spoonful*
Carolyn and David
Emmert—
Hamlet
Linda Fromke Hunt—
Hamlet
Harlan Lewis and Doris
Wittenburg—*Hamlet*
Judy Schroeder—*Hamlet*
Susan and David
Jones—*From the
Ground Up*
Harlan Lewis and Doris
Wittenburg—*From the
Ground
Up*
Harlan Lewis and Doris
Wittenburg—*Shifting
Landscapes*
Rebecca Ingwersen and
John
Links—*At First Sight*
Harlan Lewis and Doris
Wittenburg—*The
Servant of Two
Masters*
Kathryn and Barry
Brown—*Crazy
For You*
Kate Kroll—*Crazy For
You*
Cyndi and Dale Nel-
son—*Crazy
For You*
Harlan Lewis and Doris
Wittenburg—*New
Moves*

**BENEFACTOR
(\$1,000 and above)**

Ruth Albright
Diana and Rodger
Alexander
Carolyn Bailey

emailed information about all performances; glimpses behind the scenes; exclusive talks by directors, designers, and theatre scholars; special event invitations; theatre-related travel opportunities; reserved seating at numerous performances and events; and much more.

Anne and Jim Bright
Barry and Kathryn
Brown
Jean Cook and Bob
LeBien
Dan Dabney
David and Carolyn
Emmert
Phil Evans and Herbert
Kuebler
Bob Galm
Jo Ellen and Steve Ham
Marlin Howard
Becky Hrisomalos
Rebecca Ingwersen
and John Links
David and Susan Jones
Kate Kroll
Harlan Lewis and Doris
Wittenburg
Sandy and Joe Morrow
Dale and Cyndi Nelson
Joan C. Olcott
Judy Schroeder
John and Jennifer
Sejdinaj
Judy Shettleroe
Bradley C. Wheeler

**PATRON
(\$500 –\$999)**

David and Terry Baer
Jean Creek
James V. Faris II
Jacqueline and William
Gilkey
Carter F. and Kathleen
M. Henrich
Idalene Kesner and
Paul Robins
Earl Luetzeschwab and
Deborah Burkhart
R. Keith and Marion
Michael
Jonathan and Miah
Michaelsen
Carol and Wade
Peacock
Kathleen Soens
Laura C. Trout

**SPONSOR
(\$250–\$499)**

Douglas and Hilary
Anderson
Robert Aspy, Jr. and

Barbara Aspy
John and Teresa Ayres
Cathleen Cameron
Liam Castellan
Carolyn and John
Collins
Paula Sunderman
Mary Cox and James
Koch
Julie and Cary Curry
Lee Ehman and
Barbara Wilcox
David and Tyler
Ferguson
Jo E. and George
Fielding
Michael and Patricia
Gleeson
Linda Gregory
Rita Grunwald
John Hobson
Kate Kroll
Joyce Krothe
Diana Dehart Lehner
Gerald and Audrey
Marker
Dale and Sherry
McFadden
Howard Mehlinger
Virginia and Michael
Metzger
Stephen J.E. and Sandra
S. Moberly
Harold and Denise
Ogren
Patrick O'Meara
Robert and Donna
Ormiston
George Pinney and
Scott Jones
Mary and John Popp
Stanley Ritchie
Phyllis Schwitzer
Richard Shiffrin and
Judith Mahy-Shiffrin
Erldine M. Simic
Steve and Sue
Waggoner
Mary H. Wennerstrom
William and Patricia
Wheeler

**CONTRIBUTOR
(\$100–\$249)**

Katherine and Charles
Aiken

* Denotes donors who have passed away, but whose gift continues to benefit the department and its students.

Patricia and Sam
Ardery
David and Joan Austin
Sarah Baumgart and
William Lozowski
Ernest Bernhardt-
Kabisch
Herbert and Juanita
Brantley
Michael Hunt and Darla
Brown
Ann F. Burke
Gerald Calkins
Joan Caulton and
Edwin Greenebaum
Sandra Churchill
Susan and John
Cronkwhite
Jeffrey Pamela Jones
Davidson
Samuel J. Davis Jr.
Lisa and Jack Deinlein,
Jr.
Rosemary and Richard
Dever
Pam and William
Fawcett
Shirley Fitzgibbons
Anne T. Fraker
Sandra and Donald
Freund
Nancy and Tom
Gettinger
Hendrik and Bienenke
Haitjema
Connie and Russell
Hanson
Audrey and Kenneth
Heller
Steven L. Hendricks
Kathryn & Craig
Holden
Lois and Richard Holl
Peter Jacobi
Margaret and Donald
Jones
Iris Kiesling
Earl Kirk
Ron Kovenor
Rose Krakovitz
David W. Kramer
Joan Lauer
Charles Leinenweber
Carolyn Lipson-Walker
and George Walker
Jeanne and James
Madison
Priscilla and William
Manwaring
Nancy Martin
Maribeth and Richard
McKaig
James L. McLay
Perry and Nancy Metz
Michael and Virginia
Metzger
Geraldine Miller
Patricia and John
Mulholland
Susan and Charles
Nelson

Evelyn Niemeyer
Norman and Jeanne
Overly
Joanne Passet and
Deborah Wehman
Travis and Katherine
Paulin
Carol Pierce
Linda and Paul Pisano
Catherine Feltus
Preston
Mary F. Popp
Scott and Susan
Putney
Elizabeth and Rudolf*
Raff
Dennis J. and Mary C.
Reardon
John and Lislott
Richardson
Kathy and Steve
Riordan
F. Wayne Roberts
Dick Rose and Anne
Fraker
Beth and David Rupp
Marilyn Saum
Julie Schmid
Sue Sgambelluri
Mary and Rob
Shakespeare
Kathleen Sidel
Lynne Perkins Socey
and Matthew Socey
Diane Spofford
Gary and Anne
Steigerwald
Mary Strow
Jeffrey and Michelle
Stuckey
Sara Sue Sturgeon
Gerry Titus
Judith Walcoff
Joseph and Mary
Walker
Richard and Donna
Wolf

DONOR (\$50–\$99)

Elaine and Philip
Amerson
Rebecca Cambridge
Joan Capella
Joan Benavole Curtis
Cheryl and Michael
Engber
Martha Fiffer
Allen Hahn and Karen
Keagle
Bruce L. Jaffee
Barbara and Werner
Jorck
Susan Koutiel Hiller
Marilyn Norris
Charles Railsback
Patricia Smith
N. J. Stanley
Gene and Ellen Stern
Kenneth and Brenda
Tewel
Judy Wertheim

OTHER CONTRIBUTIONS (\$1–\$49)

Carroll Britch
Michael and Betsy
Walsh
Janice and Walter
Stewart

HONORARY LIFETIME MEMBERS

Harv and Connie
Hegarty
John Kinzer
Marilyn Norris
Susan Parrish and
Thomas P. Shafer

BICENTENNIAL SUPPORTERS (\$200+)

David Baer
Cathleen Cameron
Carolyn and John
Collins
David and Tyler
Ferguson
Michael and Patricia
Gleeson
Carter F. and Kathleen
M. Henrich
John Hobson
Idalene Kesner and
Paul Robins
Rose Krakovitz
David W. Kramer
Kate Kroll
Dale and Sherry
McFadden
James McLay
Virginia and Michael
Metzger
Stephen E. and Sandra
S. Moberly
Norman and Jeanne
Overly
George Pinney and
Scott Jones
Deb Wehman and
Joanne Passet
Beth and David Rupp
Dick Rose and Anne
Fraker
Erdine Simic
Kathleen Soens
Mary H. Wennerstrom
Patricia and William
Wheeler

MEMORIALS

David Albright
Eleanor Auer
J. Jeffery Auer
Richard C. Burke

Ledford and Julia
Carter
Nelda Christ
Dorothy (Dottie)
Collins
Don Cook
Carolyn Kovener
Donna Creek
Cyril M. Franks
Charles and Adele
Gallus
Martha and Victor
Harnack
Sandra L. Hertling
Frank Hrisomalos
Howard Jensen
Harold Watling Jordan
Lambert and Elizabeth
Kiehler
Sara LeBien
Nita Levison
Jeanette Calkins
Marchant
Rosemary Miller
Leonard M. Phillips
Robert L. Shettleroe
Reva Shiner
Coleen Stanley
Fontaine Syer
Grafton
Herman B. Wells
Albert Wertheim
Nathan and Pamela
Zauel
Paul N. Zietlow

THE THEATRE CIRCLE BOARD OF DIRECTORS 2019–2020

President
Harlan Lewis

Vice President
John Hobson

Secretary
Carolyn Emmert

Treasurer
Marlin Howard

Carolyn Bailey
Danielle Bruce
Jean Cook
Ashley Dillard Chilla
Maribeth McKaig
Cyndi Nelson
Richard Rose
Brad Schiesser
Judy Schroeder

THEATRE CIRCLE STUDENT BOARD REPRESENTATIVES 2019–2020

Brynn Jones
Christopher Plonka

Contributions

CONTEMPORARY DANCE CONTRIBUTORS

Lillian R. Feldman-Hill
Jennifer L. Gray and Alan S.
Bradley
Deborah C. Galvin
Robert J. Hamm Jr. and
Gwendolyn A. Hamm
Joy C. Johnson and Jerry L.
Johnson J.D.
Allen Hahn and Karen Keagle
George and Mary Korinek
Rose M. Krueger
Laura Judson and Nikolaus Miller
Harlan Lewis and Doris
Wittenburg
Meghan McGill
Miah and Jonathan Michaelson
Elizabeth Jo Monnier
Dennis W. and Lynette A. Organ
Linda and Paul Pisano
Susan B. Glenn-Salerno and
Richard P. Salerno
Mary Strow
Sheila A. Ward, Ph.D.

JANE FOX DANCE FUND CONTRIBUTORS

Jane Fox
Catharine and Thomas Buck
Jacqueline and Stephen Frew
Gwendolyn and Robert Hamm Jr.
Rose Marie Krueger
Christina Strack

TED JONES STUDENT TRAVEL FUND CONTRIBUTORS

Katherine M. Aiken and Charles
C. Aiken
Louray G. Cain
Lauren Hausmann
Marianne Hausmann and William
Hausmann
Ted W. Jones
Jane Pennell McIntosh
Amy N. Osajima
Eleanor Owicki
Lea Plut-Pregelj and Vladimir N.
Pregelj
Doris F. Wittenburg and
Harlan L. Lewis

THEATRE & DRAMA FUND CONTRIBUTORS

Rita Murray Anderson and Robert
D. Anderson

Nancy Baird
Thomas M. Baydala
Judith Biersdorfer
Josiah A. Brown
Joan M. Capella
Hoagy B. Carmichael
Ashley M. Chilla
Wendy W. and Thomas P. Collins,
Ph.D.
Allison C. Conrad and Donald W.
Conrad
Mary and Sheldon Cooper
Georgia R. and Mark K. de Araujo
Kimberlee M. Demers and Alan
Demers
Diane T. Dickinson Patrick
Claire and Christopher Dippel
Gresdna A. Doty, Ph.D.
Sean M. Dumm
Jacqueline and Richard Dunham
Harriet and William Fierman
Elizabeth and Steve Hass-Hill
Scott Hogsd
Todd and Lynn Honderd
Elizabeth and David Ihlenfeld
Laura Judson and Nikolaus Miller
Joe D. King
Douglas and Kay Long
Linda A. Longhove
The Honorable P.A. Mack, Jr.
Tom Mazur
Richard and Terry McCall
Laura K. McClellan
Marvin D. Moody, Ph.D.
Lawrence Myers, Jr.
Cyndi and Dale Nelson
Christina D. Ondrik
Robert R. Ormiston
Rhoda and C.K. Peters
Linda and Paul Pisano
Phil and Joyce Probst
David L. Rinear
Corey Rosenberg
Curtis and Judith Simic
Lynne Perkins Socey and Matthew
Socey
Diane J. Spoffard
Janice and Walter Stewart
R. Brent Wagner
June E. Weiland
Doris F. Wittenburg and Harlan
L. Lewis
Donna and Richard Wolf

STUDENT SHOWCASE FUND 2020 CONTRIBUTORS

Ruth Albright
Carolyn Bailey
Michele Bergonzi
Anne and Jim Bright
Joan Caulton and Edwin
Greenebaum

Jo Ellen and Steve Ham
Ronald Kovenor
Kate Kroll
Richard and Maribeth McKaig
George Pinney and Scott Jones
Judy Schroeder
Judy Shettleroe
Kathleen Sidel

IU SUMMER THEATRE FUND 2019 CONTRIBUTORS

ADOPT AN ARTIST

Diane and Rodger Alexander
Joe and Sandy Morrow
Harlan Lewis and Doris
Wittenburg

SPOTLIGHT A MUSICIAN

Lyndsay Gilman and William
Ward
Dale and Cyndi Nelson
Carol and Wade Peacock

AUDREY'S GARDENERS

Charles C. Aiken
Anne and Jim Bright
John and Carolyn Collins
Robert and Sandra Klemeyer
Dick and Maribeth McKaig
Phil and Joyce Probst
Judy Schroeder

COFFEE CONTRIBUTORS

Keith and Colleen Alexander
Samuel and Patricia Ardery
Judith Biersdorfer
Susan and John Cronkwhite
Samuel Davis Jr.
Jackie and William Gilkey
Steve and Jo Ellen Ham
John Hobson
Susan and David Jones
Martin and Linda Kaplan
George and Mary Korinek
Kate Kroll
Geraldine C. Miller
Stephen and Sandra Moberly
Catherine Preston
Connie Savopoulos
R. Brent Wagner
D. Terry and Sharon Williams

ADDITIONAL GIFTS

Rita and Robert Anderson
Earnest Bernhardt-Kabisch
Ann F. Burke
Clair and Chris Dippel
Dee Hopkins
August and Virginia Semenick
Walter and Janice Stewart

* Denotes donors who have passed away, but whose gift continues to benefit the department and its students.

* Denotes donors who have passed away, but whose gift continues to benefit the department and its students.

2019–20 SEASON ASSOCIATE PRODUCERS

Diane and Rodger Alexander
Carolyn Bailey and Jeff Davis
Anne and Jim Bright
Jean Cook and Bob LeBien
Harv and Connie Hegarty
Becky Hrisomalos
Joan Olcott

2019–20 SEASON PARTNER LEVEL ASSOCIATE PRODUCERS

Ruth Albright
Kathryn and Barry Brown
Carolyn and David Emmert
Jo Ellen and Steve Ham
Marlin Howard
Linda Fromke Hunt
Rebecca Ingwersen and John Links
Susan and David Jones
Kate Kroll
Harlan Lewis and Doris Wittenburg
Cynthia and Dale Nelson
Judy Schroeder
Judy Shettleroe

Special thanks to our season associate producers

The contributions of associate producers directly fund an IU Theatre production of the donor's choice. As an associate producer, you will help directly support the cost of a production's costume, scenic, lighting, sound, and projection design. Your name will be featured in our programs and all curtain speeches. You will also enjoy benefits as year-round members of Theatre Circle, an organization founded to promote and encourage the study and practice of theatre arts in the Department of Theatre, Drama, and Contemporary Dance and an awareness of theatre throughout the community.

For more information, please pick up a Theatre Circle brochure in the lobby or contact Laura Judson at ljjudson@iu.edu or by phone at 812-855-7699; or visit the Department of Theatre, Drama, and Contemporary Dance website at theatre.indiana.edu and select the Theatre Circle link.




THEATRE & DANCE

BY THE BOG OF CATS
SEP 27–OCT 5

REMEMBERING AND FORGETTING

the·mes·ter FALL 2019

 THE COLLEGE OF ARTS + SCIENCES

BIG FISH
OCT 23–NOV 2

WATER BY THE SPOONFUL
NOV 8–16

HAMLET
DEC 6–14

FROM THE GROUND UP
JAN 22–25

SHIFTING LANDSCAPES
2020 Winter Dance Concert
FEB 7–9

AT FIRST SIGHT
New Play Festival
FEB 21–29

THE SERVANT OF TWO MASTERS
APR 3–11

CRAZY FOR YOU
APR 17–25

NEW MOVES DANCE CONCERT
Senior Capstone Showcase
MAY 1–2

**2019–20
SEASON**

theatre.indiana.edu



INDIANA UNIVERSITY
BICENTENNIAL

100 YEARS