

By arrangement with Fiery Angel Limited
Adapted by Patrick Barlow
From the novel by John Buchan
From the movie by Alfred Hitchcock
Licensed by ITV Global Entertainment
An original concept by Simon Corble and
Nobby Dimon

Directed by Jenny McKnight



Lyrics by Tim Rice
Music by Andrew Lloyd Webber

Directed and Choreographed by DJ Gray
Musical Direction by Ray Fellman



ON THE SUMMER FESTIVAL SCENIC SHELL
IN THE WELLS-METZ THEATRE

IU Theatre + Dance acknowledges and honors the Indigenous communities native to this region, and recognizes that Indiana University Bloomington is built on Indigenous homelands and resources. We recognize the myaamiki, Lënape, Bodwéwadmik, and saawanwa people as past, present, and future caretakers of this land.

LIVE PERFORMANCE

The mission of the Department of Theatre, Drama, and Contemporary Dance is to advance the art, scholarship, and appreciation of theatre and dance and its place in society. We pursue this mission collectively and as individuals through theatrical productions, scholarship and publication, presentation of our work in national and international venues, formal instruction, and individual mentoring.

The Department of Theatre, Drama, and Contemporary Dance is accredited by the National Association of Schools of Theatre and is a member of the University/Resident Theatre Association and United States Institute for Theatre Technology.

LIVING IMPACT



Message from the producer



Dear IUST
Audiences,

We are ecstatic
to welcome
you back to
our beloved
IU Summer
Theatre! 2019

was our last in-person season and although we were so grateful for the opportunity to produce radio plays in partnership with WFIU and a musical for digital streaming in 2021, we truly missed our face-to-face engagement with you, our audiences!

This year we are delighted to bring in stellar artistic teams with stage directors DJ Gray and Jenny McKnight at the helm. Focusing in on our mission to provide professional experiences for our students and audiences, I personally am happy to introduce you to the many guest artists and students who make these productions possible, including guest United Scenic Artists lighting designer Betsy Coopridge-Bernstein, AEA guest actor Grant Goodman and AEA alumnus Kevin Dolan, AEA and Musical Theatre B.F.A. student Mikayla White, guest costume draper Dana Tzvetkov, and alumni guest actors Josh Hogan and Jessica O'Brien, scenic designer Rachel Rose Burke, assistant sound designer Anna Fagin, stage manager Lina Ann Millsap, and assistant stage manager Quynn Hickey.

Please be sure to read their bios in this program.

Our IUST would not be possible without you, our audiences, but also without the steadfast friendship and generous gifts from Associate Producers, the Theatre Circle, and the Lee & Deb Norvelle Guest Artist Fund as well as additional funding from the College of Arts and Sciences in support of our academic and artistic mission.

I'd also like to take a moment to acknowledge the many union members participating in our IUST company this summer, in addition to the guest artists listed above. We work with members of Actors Equity Association, Stage Directors and Choreographers Society, United Scenic Artists Local 829, the International Alliance of Theatrical Stage Employees Local 618, and the American Guild of Musical Artists. Our industry unions guide the policies and procedures we implement to ensure our summer work environment is healthy, safe, equitable, and of the highest quality.

Thank you for attending and supporting IUST and its mission of bringing professional theatre in support of our academic programming to our summer Bloomington and regional audiences. Enjoy the show!

Linda Pisano
Producing Artistic Director, IUST
Chair & Professor, Theatre & Dance

PRESENTS

JOSEPH AND THE AMAZING TECHNICOLOR DREAMCOAT

Lyrics by Tim Rice
Music by Andrew Lloyd Webber

**DIRECTOR &
CHOREOGRAPHER**

DJ Gray[^]

MUSIC DIRECTOR

Ray Fellman

SCENIC DESIGNER

Rachel Rose Burke

COSTUME & WIG DESIGNER

Jason Orlenko*

LIGHTING DESIGNER

Betsy Coopridier-Bernstein*

SOUND DESIGNER

Andrew Hopson*

PROJECTION DESIGNER

Spencer Donovan

STAGE MANAGER

Connor Vincek

DRAMATURG

Madison Colquette



[^]The director is a member of the Stage Directors and Choreographers Society,
a national theatrical labor union.



*Members of United Scenic Artists Local 829, IATSE.

The video and/or audio recording of this production is strictly prohibited.
Do not use cell phones, pagers, or other devices that may emit sound or light.

WELLS-METZ THEATRE | JULY 2–31, 2022

Cast

JOSEPH	Shane Stoltz
NARRATOR	Mikayla White*
NARRATOR	Hannah Kulawiak
NARRATOR	Gracie Harrison
JACOB/ISSACHAR, U/S JOSEPH	Kevin Dolan*
REUBEN/ZEBULUM/ BAKER, U/S POTIPHAR	Matthew Mason Baker
SIMEON, U/S MRS. POTIPHAR	Hannah Zeldin
PHARAOH/NAPHTALI	Tiana Williams
ASHER, U/S JUDAH	Evan Vaughan
DAN/BUTLER, U/S PHARAOH	Alanna Porter
BENJAMIN/ MRS. POTIPHAR, U/S SIMEON	Mackenzie Bunzel-Hardie
JUDAH	Devin McDuffy
GAD/POTIPHAR, U/S JACOB	Jake Kline
LEVI, U/S ASHER	Helen Kritzman

SPECIAL THANKS

Denise Stuempfle for calypso consultation, Joe Galvin for steelpan consultation, Adam Bell for accordion consultation, Stephen Stuempfle, Eric Mayer-García, Jacobs School of Music

JOSEPH AND THE AMAZING TECHNICOLOR DREAMCOAT is presented by arrangement with Concord Theatricals on behalf of The Really Useful Group. www.concordtheatricals.com



* Appears by permission of the Actors' Equity Association,
the Union of Professional Actors and Stage Managers in the United States.

Dramaturg's note



We need to talk about “Benjamin Calypso”

Joseph and The Amazing Technicolor Dreamcoat was first presented as a 15-minute pop cantata at the Colet Court School in London in 1968. The previous summer the music teacher at the school, a family friend of Andrew Lloyd Webber's, commissioned Webber and Tim Rice to write a piece for the school's choir based on the Book of Genesis.

This resulted in the full musical, in which Webber and Rice pastiche several pop-music styles in a retelling of the biblical story of Joseph. We hear this pastiching in such tunes as “One More Angel in Heaven,” “Those Canaan Days,” and, problematically, in “Benjamin Calypso.” Webber's and Rice's use of calypso for the song in which Joseph's brothers speak on behalf of the youngest brother, Benjamin, was based on the international popularization of calypso, which boomed in the post-war years and into the 1960s, rather than experience with the authentic Trinidadian calypso art form.

Calypso, a song form involving social and political commentary, originated as a part of Trinidad and Tobago's extraordinary pre-Lenten Carnival. Carnival songs in Trinidad began to be called ‘calypsos’ around 1900. These songs were influenced by a variety of African-Trinidadian folk traditions, writes Stephen Stuempfle in *The Greenwood Encyclopedia of African American Folklore*. One such tradition, he describes, involves speeches by *pierrots*, Carnival masqueraders who delivered extravagant orations. Similarly, performers of calypso adopted striking sobriquets, performers' nicknames, such as “Lord Executer” and the “Duke of Marlborough,” both names referencing British colonialism in Trinidad.



Lord Kitchener has been described as “the grand master of calypso.” Both Kitchener (pictured) and fellow calypsonian The Mighty Sparrow had considerable influence over the development of calypso from the 1950s through the end of the 20th century.

Post-war tourism led to the American “calypso craze” of 1956–1957, which was sparked by the release of Harry Belafonte's 1956 album *Calypso*. Jamaican-American Belafonte and many other artists popularized calypso for audiences around the world. Stuempfle explains that this growing popularity, combined with Caribbean tourism, constructed an image of calypso as “an exotic, light-hearted folk music, a stereotype far removed from the practice of the tradition in urban Trinidad.”

During the Carnival season, several calypso halls (called “tents”) open in Port of Spain, the capital of Trinidad and Tobago, and in other urban centers. Audience members pay admission to listen to calypso artists, referred to as calypsonians, perform individually on a stage accompanied by musicians. During the calypso competitions, Stuemple writes, audiences judge calypsonians on their “perceptiveness, imagination, diction, and wit, as well as on their ability to employ irony, innuendo, and double entendre [...] to examine topics such as recent political events in Trinidad and abroad.” Today, calypso no longer has the wide international presence it achieved during the 1950s. However, the music and the calypso competitions continue to thrive in Trinidad and many other Eastern Caribbean countries, as well as in such Caribbean diasporic cities as New York, London, Toronto, and Miami.



Calypso Rose came to prominence in the 1970s as the first woman to win the annual Calypso Monarch title. Rose's lyrics frequently address social issues like racism and sexism. Her influence over the calypso music genre prompted the renaming of the Calypso King competition to the Calypso Monarch in 1978.

Our production cannot present an *authentic* calypso. Our goal from the beginning has been to respect this Trinidadian art form by learning about the history of calypso and its evolving practice, and the appropriative use of calypso music in Webber's and Rice's musical. Denise Stuemple, a former cataloger for Latin American, Iberian, Latino & Chicano-Riqueño Studies at IU Libraries, spoke with the cast and creative team on calypso's storied history and its tradition as social and political commentary in Trinidad. She provided

materials on the art form for the cast and creative team, including resources for this note.

Joe Galvin, a Visiting Lecturer in Percussion at Jacobs School of Music, consulted with the music team to feature the steelpan, an instrument that originated in Trinidad and Tobago, during “Benjamin Calypso.”

Thank you to Denise Stuemple, Stephen Stuemple, and Joe Galvin for graciously sharing your expertise with us.

*Chalkdust is a nine-time winner of Trinidad's Calypso Monarch competition, the most wins by a calypsonian in the competition's history. Chalkdust holds a Ph.D. in history and ethnomusicology from the University of Michigan and frequently lectures and offers workshops on the history and culture of calypso music. He is the author of the books *Rituals of Power and Rebellion: The Carnival Tradition in Trinidad and Tobago, 1763-1962* and *From the Horse's Mouth, a socio-cultural history of calypso from 1900 to 2003*.*



Musical Numbers

ACT ONE

Prologue – Narrators

Any Dream Will Do – Joseph, Ensemble

Jacob and Sons – Narrators, Brothers

Joseph's Coat – Jacob, Joseph, Narrators, Brothers

Joseph's Dreams – Joseph, Narrators, Brothers

Poor, Poor Joseph – Narrators, Brothers

One More Angel in Heaven – Narrators, Asher, Brothers
Hannah Kulawiak, violin

Journey to Egypt – Narrators

Potiphar – Narrators, Potiphar, Mrs. Potiphar, Joseph,
Ensemble

Close Every Door – Joseph, Ensemble

Go, Go, Go Joseph – Narrators, Joseph, Butler, Baker,
Ensemble

This musical is presented with one 15-minute intermission

ORCHESTRA

**Conductor,
Keyboard 1**
Ray Fellman

Percussion
Justin Clark, Miles Damaso
Bass
Maya Toffler

Guitar
August Fackler
Keyboard 2
Eric Wakar

ACT TWO

A Pharaoh's Story – Narrators, Ensemble

Poor, Poor Pharaoh – Narrators, Butler, Pharaoh, Joseph,
Ensemble

Song of The King – Pharaoh, Ensemble

Pharaoh's Dream Explained – Joseph, Ensemble

Stone The Crows – Pharaoh, Narrators, Ensemble

Those Canaan Days – Simeon, Brothers
Matthew Mason Baker, Gracie Harrison, Helen Kritzman,
and Evan Vaughan, specialty dancers
Hannah Kulawiak, violin
Devin McDuffy, accordion

The Brothers Come to Egypt – Narrators, Joseph, Brothers

Grovel, Grovel – Narrators, Joseph, Brothers

Who's The Thief? – Narrators, Joseph, Brothers

Benjamin Calypso – Judah, Brothers
Alanna Porter and Devin McDuffy,
assistant choreographers
Jake Kline, steelpan

Joseph All The Time – Narrators, Joseph, Brothers

Jacob in Egypt – Ensemble

Any Dream Will Do – Joseph, Narrators, Ensemble

Megamix – Ensemble

JOSEPH AND THE AMAZING TECHNICOLOR DREAMCOAT
IS SPONSORED IN PART BY:

Associate Producers

Dale and Cyndi Nelson

Cast



MATTHEW MASON BAKER

(*Reuben/Zebulum/Baker, u/s: Potiphar*)

is a junior B.F.A. Musical Theatre major with a minor in Arts Management. He is beyond excited to be a

part of the *Joseph* cast. For IU Theatre: *Carrie* (Swing, u/s Mr. Stevens/Reverend Bliss), *Light in the Piazza* (Fabrizio), University Players: *Footloose* (Jeter), *Puffs* (J.Finch Fletchley/Others). Other shows include: *Mamma Mia!* (Sam Carmichael), *Guys and Dolls* (Benny Southstreet), and *Anything Goes* (Billy Crocker). He is extremely grateful for his supportive friends, family, and faculty for helping and encouraging him along the way.



MACKENZIE BUNZEL-HARDIE

(*Benjamin/Mrs. Potiphar, u/s: Simeon*)

(she/her) is so thrilled to be making her IUST debut in *Joseph!* Originally from California, she

is a rising sophomore studying to get her B.F.A. in Musical Theatre. Her past IU credits include *Nice Jewish Boy* and *Light in the Piazza*. Some of her other favorite credits include Christine in *Phantom of the Opera* and Hope in *Anything Goes*. She would like to thank the amazing cast and crew of *Joseph* for such a joy-filled summer and a safe and loving environment to learn and grow in. She would also like to thank her friends and family for their endless support and encouragement. She hopes you enjoy the show!



KEVIN DOLAN

(*Jacob/Issachar, u/s: Joseph*)

(he/him) is a graduated senior B.F.A. Musical Theatre major at Indiana University. Recent credits include:

Chuck Cranston in University Player's summer production of *Footloose*, Baker in Kyle Mason's independent project of *Into the Woods*, as well as Macheath in IU's production of *The Threepenny Opera*. In addition, Kevin has been featured in other projects while in Bloomington, including playing Don Price in IU Theatre & Dance's production of *Big Fish* and part of the male ensemble in an independent project of *The Hunchback of Notre Dame*. In his free time, Kevin enjoys cooking and trying new recipes, practicing, playing, or watching basketball, and singing with the guys in his a cappella group, *Another Round*. He is so thankful to have such an amazing support system, and sends special love to his family and best of friends. Kevin hails from Washington D.C. and hopes to venture to New York City to follow his dream soon.



GRACIE HARRISON (*Narrator*)

(she/her) is so excited to be making her IUST debut! She is a sophomore musical theatre major minoring in media and creative advertising

and arts management. Recent credits include: Lizzie in *Lizzie* (University Players), Kathy in *Company* (IU Independent Project), Lila in *Adored You* (IU Mainstage), and Ensemble in *Footloose* (University Players). Other credits include: Cinderella in *Into the Woods*, Brooke in *Be More Chill*, and Maria in *The Sound of Music*.

**JAKE KLINE**

(*Gad/Potiphar, u/s: Jacob, Steelpan*)

is a rising junior B.F.A. Musical Theatre major and is thrilled to be a part of IUST for the first time. Some of Jake's

theatre experiences include: *The 25th Annual Putnam County Spelling Bee* (Chip Tolentino) for Independant Project, *The Threepenny Opera* (Walter) for Indiana University, *Footloose* (Cowboy Bob) for University Players, *Bright Star* (Daddy Cane) for University Players, and *Shrek* (Shrek) for B.E.S.T. Jake wants to give the biggest thank you to his cast and crew for this incredible opportunity to do what he loves.

**HELEN KRIZMAN**

(*Levi, u/s: Asher*)

is a senior majoring in Theatre & Drama. For IU Theatre: *The Well of Horniness* (Narrator). For Cardinal Stage: *Newsies* (Nun/Bowery Beauty/Newsie).

Other: *American Idiot* (Libby/Leslie), *Rocky Horror* (Phantom Alto), *Footloose* (Wendy Jo). Helen is from Wilmette, IL.

**HANNAH KULAWIAK**

(*Narrator, Violin*)

(she/her) is a Senior B.F.A. Musical Theatre major with a minor in Media and Creative Advertising. For IU Theatre: *Carrie* (Margaret White),

The Threepenny Opera (Swing), *Bonnets* (Ensemble/Standby), *Spring Awakening* (Pit Orchestra - Violin). For IU Independent Projects: *The Light in the Piazza* (Clara), *The Hunchback of Notre Dame* (Ensemble). For IU Summer Theatre: *Twisted Tales of Poe* (Helen, Mrs. Pitts, Ensemble). For IU University Players: *American Idiot* (Pit Orchestra - Violin). She has also performed as a featured vocalist with The Cleveland Pops Orchestra in Cleveland, OH.

**DEVIN MCDUFFY**

(*Judah, Accordion, Vocal Captain*)

is a second-year student getting his B.F.A in Musical Theatre. For IU Theatre: *The Threepenny*

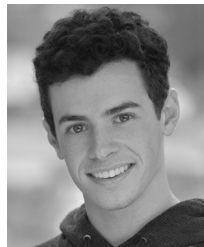
Opera (Pastor Kimble, u/s: Robert), *Black Superhero Magic Mama* (Tom Blackman/Human Hyena) For Footlite Musicals: *Bring It On* (Cameron) and *Joseph and the Amazing Technicolor Dreamcoat* (Judah) Others: *25th Annual* (Mitch Mahoney), *Rumors* (Ken), *Footloose* (Lyle), and *Mary Poppins* (George Banks). Devin McDuffy is from Indianapolis, IN.

**ALANNA PORTER**

(*Dan/Butler, u/s: Pharaoh, Dance Captain*)

(she/her) is a second-year IU student pursuing a B.F.A. in Musical Theatre. She is so excited to be

performing with IUST for the first time! This will be her fourth production at IU. Some of her other credits include: *Jump* (Judy), *Carrie* (Miss Gardener), and *Footloose* (Ethel). Alanna is from Indianapolis, IN.

**SHANE STOLTZ**

(*Joseph*)

(he/him) a rising third-year Musical Theatre major from Bucks County, PA, performed in his first show, *Joseph*, in second grade and

is extremely grateful for this incredible opportunity to return to the beginning years later. Recent performances for IU Theatre: *The Threepenny Opera* (Officer Smith), *Carrie* (Swing/Tommy Understudy), *Spring Awakening* (Otto). For University Players: *Footloose* (Willard), *Modern* (Jeremiah). Special thanks to his friends and family for their support, as well as this amazing cast and crew!

**EVAN VAUGHAN**

(Asher, u/s: Judah, Benjamin Calypso)

(he/him) is a third-year student pursuing a B.F.A. in Musical Theatre. Indiana University credits: *Waycross* (Cole) Other

credits include *Bring It On: The Musical* (La Cienega), *Mary Poppins* (Bert), *Modern* (Maurice). Evan is from Indianapolis, IN and is excited to continue his involvement in IU productions throughout the rest of his academic years.

**MIKAYLA WHITE**

(Narrator)

(she/her) is so excited to be in this amazing production of *Joseph and The Amazing Technicolor Dreamcoat*! She is a New Jersey native

and first-year B.F.A. Musical Theatre Major. Some of her past productions include IU Theatre: *Carrie: The Musical* (Ensemble) Other: *Light in the Piazza* (Franca), Paper Mill Playhouse's *New Voices Concerts*, The Original Broadway Workshop of *School of Rock: The Musical* (Madison, u/s Tomika), *Hairspray* (Little Inez), *Sister Act* (Tina), *Seussical: The Musical* (Sour Kangaroo). She wants to express her gratitude to the Creative Team and Cast of *Joseph*, IU Musical Theatre, her family and friends for all their love and support!

**TIANA WILLIAMS**

(Pharaoh/Naphtali)

(she/her) is an ambitious artist and senior in the B.F.A. Musical Theatre Program also pursuing her minor in Criminal Justice. Her past IU

productions include: *The Threepenny Opera* (Lucy Brown), *Little Women* (Beth), *Bonnets: How Ladies of Good Breeding Are Induced to Murder* (Georgette), *Stick Fly* (Cheryl!), and

More Perfect Places (Ensemble). Outside productions include *The Wiz* (Dorothy), *The Sound of Music* (Elsa Schrader), *Evita* (Ensemble), *Ragtime* (Sarah), *In the Heights* (Vanessa), *Matilda* (Ms. Phelps), *Calder the Musical* (Josephine Baker), *Legally Blonde* (Pilar), *Aida* (Nehebka), and University Player's *American Idiot* (Extraordinary Girl). Tiana is a 2022 IU NAACP Image Award recipient for her advocacy in the arts. She served on IU Theatre, Drama, and Contemporary Dance's Student Advisory Board for 2 years. Tiana is from Indianapolis, IN and very excited for her IUST debut!

**HANNAH ZELDIN**

(Simeon, u/s: Mrs. Potiphar)

(she/her) is a senior from Atlanta, GA earning a B.F.A in Musical Theatre and minoring in sustainability. For IU

Theatre: *The Threepenny Opera* (Jimmy), *The Servant of Two Masters* (First Porter), *Bonnets* (Laurent). For University Players: *Bright Star* (Margo Crawford), *Footloose* (Ariel Moore). Hannah has enjoyed performing in and around her hometown of Atlanta in theaters such as The Horizon Theatre, Synchronicity, and The Alliance Theatre.

PRESENTS

THE 39 STEPS

Adapted by Patrick Barlow
From the novel by John Buchan
From the movie by Alfred Hitchcock

DIRECTOR Jenny McKnight^

SCENIC DESIGNER Rachel Rose Burke

COSTUME DESIGNER Eriko Terao

LIGHTING DESIGNER Betsy Coopridier-Bernstein*

WIG DESIGNER Jason Orlenko*

SOUND DESIGNER Andrew Hopson*

PROJECTION DESIGNER Spencer Donovan

STAGE MANAGER Lina Ann Millsap

DRAMATURG Chris Mills

**Please be advised that this production contains some minimal adult language
and the sound of gunshots.**



^The director is a member of the Stage Directors and Choreographers Society,
a national theatrical labor union.



*Members of United Scenic Artists Local 829, IATSE.

The video and/or audio recording of this production is strictly prohibited.
Do not use cell phones, pagers, or other devices that may emit sound or light.

WELLS-METZ THEATRE | JULY 2-30, 2022

Cast

RICHARD HANNAY Grant Goodman*

PAMELA EDWARDS Leah Mueller

CLOWN #1 Joey Cerone

CLOWN #2 Bobby Ayala Perez

CLOWN #3 Gavin Douglas

CLOWN #4 Jessica O'Brien

UNDERSTUDY Josh Hogan

UNDERSTUDY Anna Lagrange



* Grant Goodman is a member of the Actors' Equity Association,
the Union of Professional Actors and Stage Managers in the United States.

This play is presented with one 15-minute intermission

THE 39 STEPS is presented by arrangement with Concord Theatricals on behalf of Samuel French, Inc.
www.concordtheatricals.com

By Arrangement with Fiery Angel Limited:

THE 39 STEPS

Adapted by Patrick Barlow

From the novel by John Buchan

From the movie by Alfred Hitchcock

Licensed by ITV Global Entertainment Limited

And an original concept by Simon Corble and Nobby Dimon

The original London production—directed by Maria Aitken, designed by Peter McKintosh, lighting designed by Ian Scott, sound designed by Mic Pool, and movement directed by Toby Sedgwick—opened at the Tricycle Theatre (now known as Kiln Theatre) in Kilburn in August 2006 and transferred to the Criterion Theatre in the West End on 14th September 2006 and subsequently to the American Airlines Theatre on Broadway on 15 January 2008. The original production was directed by Fiona Buffini. This production is licensed and the film is distributed by ITV Global Entertainment Ltd.

THE VIDEOTAPING OR MAKING OF ELECTRONIC OR OTHER AUDIO AND/OR VISUAL RECORDINGS OF THIS PRODUCTION AND DISTRIBUTING RECORDINGS OR STREAMS IN ANY MEDIUM, INCLUDING THE INTERNET, IS STRICTLY PROHIBITED. A VIOLATION OF THE AUTHOR(S)'S RIGHTS AND ACTIONABLE UNDER UNITED STATES COPYRIGHT LAW. FOR MORE INFORMATION, PLEASE VISIT:
<https://concordtheatricals.com/resources/protecting-artists>

Dramaturg's note



When John Buchan wrote *The 39 Steps*, in a few weeks in 1915, most of his friends were marching off to war.

Buchan was laid up with a duodenal ulcer; he suffered severe abdominal pain throughout his life, even after surgery. He convalesced in a town called Broadstairs on the west coast of England, bed-ridden in a cottage above 78 stone steps to the sea. There, Buchan dreamt up an astonishing character and a new genre of writing: the Spy Adventure. Tales so tall and full of twists that they border on the preposterous. Richard Hannay—the adventurer—was smart, resourceful, cheeky, and just two years younger than Buchan, who had just turned . . . 39. Hannay's derring-do captivated readers. Twenty years later, a burgeoning filmmaker was drawn to this story according to his own artistic interest: the account of an innocent man on the run.

Alfred Hitchcock added a few things to Hannay's journey: women, for one thing. Buchan's world was largely male-populated, but Hitchcock brought a few couples into the mix, as well as the first of the "Hitchcock blondes": Pamela. Pamela (regardless of hair color) brightens and balances Hannay's character and the fraught space between them makes for a more watchable film—as Hitchcock has shown in any number of other movies. What would *Vertigo*, *Rear*

Window, or *North by Northwest* be without Kim Novak, Grace Kelly, or Eva Marie Saint? Hitchcock's pairings help keep us glued to the action.

Next step? Add theater.

In 2005, Patrick Barlow serves as the next anchor in *The 39 Steps* relay. Using a four-actor concept developed by Simon Corble and Nobby Dimon, Barlow's adaptation swings the bravado of Buchan's spy tale in a daring and dramatic new direction: in this version, our cheeky and resourceful adventurers are the actors.

Every play's performance needs actors to make the story come alive, but this one is built to test the limits of what actors can do—like the exploits of our original hero—to nearly-preposterous levels. A crowd of characters, settings, and fast-moving actions whirl by in this performance, and the world of the play depends on the smart and speedy work of those onstage, architecting each moment and plumbing its depth before swiftly jumping to the next. And, just as Hannay's adventuring becomes more full-blooded with Pamela along, tonight's performance of *The 39 Steps* is richer in partnership with you, our audience. Much of the delight of the show is that it involves us all—it needs everyone to join the fun and imagine each moment as the actors offer them up. So, buckle up and get ready, time for a little adventure.

Enjoy the show and please check out IU Theater's thrilling 2022-23 season at theatre.indiana.edu.

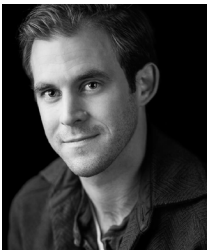
Cast



JOEY CERONE
(Clown #1)

is an incoming senior at Indiana University pursuing a B.A. in theatre with a concentration in acting. He is from Fishers, IN. He

was previously featured as an Ensemble member in Indiana University's production of *Bowling for Beginners* as a part of *At First Sight*. Joey is also involved in performing arts as a standup and sketch comedian. He has been featured at the World Comedy Expo as well as the Bloomington Standup Summer Competition.



GAVIN DOUGLAS
(Clown #3)

is a third-year M.F.A. acting candidate in the IU Theatre program. He comes from the Pacific Northwest, having worked previously in Oregon

and Washington. He received his B.F.A. from Southern Oregon University in Ashland Oregon. This is his first season working with Indiana Summer Theatre, and has been having an absolute blast. A big thank you to the incredible cast, crew, and designers working on this show.



GRANT GOODMAN
(Richard Hannay)

is delighted to return to IUST where he has appeared as Benedick in *Much Ado About Nothing*, Oberon/Theseus in *A Midsummer*

Night's Dream, Colonel Brandon in *Sense & Sensibility* and Captain Wentworth in *Persuasion*. New York (Broadway/Off-Broadway): *King Lear*, *The Iliad* (Lincoln

Center), *Antony & Cleopatra*, *The Merchant of Venice* (Theatre for a New Audience), *Pericles* (Red Bull), *Three Sisters* (International Chekhov Festival), *Richard II* (NY City Center/Pearl Theatre). Regional: Yale Repertory, Shakespeare Theatre Company (DC), Chicago Shakespeare Theater, The Old Globe, Actors Theatre of Louisville, Hartford Stage, Court Theatre (Chicago), Cincinnati Playhouse in the Park, Cleveland Playhouse, Indiana Repertory, PlayMakers Repertory, Syracuse Stage, Milwaukee Repertory, People's Light (Philadelphia), Shakespeare Theatre of New Jersey, Arizona Theatre Company and the Utah, Notre Dame, Indianapolis, Illinois and Kentucky Shakespeare Festivals among many others. Film/Television: *Chicago Fire*, *As the World Turns*, *Sex and the City*, *Sleepers*. Training: NYU. This Fall, Grant will appear as Henry Condell in Lauren Gunderson's *The Book of Will* in Phoenix, AZ.



JOSH HOGAN
(Understudy)

was last seen here at IU understudying Segismundo and Clotaldo in *Sueño, Lonely Planet* as Carl, and *The Goat, or Who is Sylvia?* (Billy).

Josh has also been in various productions around IU's theater, working primarily with the underground scene and working closely with the graduate program with shows such as *Universal Robots* (Radius/Radosh), *Rabbit Hole* (Howie), *She Kills Monsters* (Orcus), *Body Awareness* (Jared), *Playing on the Periphery* (Robert), and *The Weir* (Finbar Mack).

**ANNA LAGRANGE***(Understudy)*

(she/her) is an undergraduate rising senior excited to be a part of her first IU Summer Theatre production. Her prior production

with IU Theatre Department includes the *At First Sight* radio play, *Waycross*. She has also performed in the University Players productions of *Puffs*, *Moonchild*, *Metamorphoses*, and directed the staged reading of *Memories for Sale*. She also performs as a member of IU's longest running improv troupe, Full Frontal Comedy. She hopes you enjoy the show and make sure to count all of the steps!

**LEAH MUELLER***(Pamela Edwards)*

(she/her) is thrilled to be performing in *The 39 Steps* with IUST! Leah is an M.F.A Acting Candidate. For IU Theatre: *Sueño* (Rosaura), *The Well*

of Horniness (Vicki), *Stickfly* (Kimber). For FUSE Productions: *Sunday in the Park with George* (Dot/Marie), *Matilda* (Miss Honey), *Merrily We Roll Along* (Beth). For Nittany Valley Shakespeare Company: *King Lear* (Cordelia/Fool). For The Next Stage: *Don Juan in Hell* (Dona Ana). Leah is from State College, PA.

**JESSICA O'BRIEN***(Clown #4)*

is a recent graduate from IU and she is grateful to be spending her summer with IUST. For IU Theatre: *Bowling for Beginners* (Karina).

For University Players: *Bright Star* (SM), *She Kills Monsters* (Kaliopo), *Triassic Parq* (T-Rex 1/Kaitlyn). For 574 Theatre Company: *Into the Woods* (Swing). For Penn High School: *Shrek* (Fiona), *Kiss Me, Kate* (Lois Lane), and *A Midsummer Night's Dream* (Puck). Jessica is from South Bend, IN.

**BOBBY AYALA PEREZ***(Clown #2)*

is a third-year M.F.A. candidate in acting from Cleveland, OH. There he worked in theatres such as Cleveland Public

Theatre, convergence-continuum, and with the Cleveland Shakespeare Festival. After receiving a B.A. in Theatre with an emphasis on performance, he moved to Los Angeles where he continued working on stage and in front of and behind the camera. He also trained and worked at Actors Comedy Studio in LA. He is delighted to be a part of the theatre program at Indiana University. For IU Theatre: *Twelfth Night* (Sir Andrew), *More Perfect Places*, *Jump* (Hopkins), and *Sueño* (Segismundo).

Selected clown roles

CLOWN 1

Compère
Heavy 1
Salesperson 2
Porter
Constable
Pilot 2
Mrs. McGarrigle

CLOWN 2

Mr. Memory
Heavy 2
Milkman
Salesperson 1
Paperboy
Pilot 1
Mrs. Jordan
Mr. McGarrigle

CLOWN 3

Questioners
Mrs. Higgins
Police Officer
Crofter
Professor Jordan
Sheriff
McQuarrie
Sheep

CLOWN 4

Annabella
Police Officer
Margaret
Scottish Inspector
Dunwoody
Sheep
Inspector Albright

IUST production staff

Summer Festival Scenic Shell Designer

Reuben Lucas

Assistant Lighting Designer

Lily K. Howder

Assistant Sound Designer

Anna Fagin

Calypso Consultant

Denise Stuempfle (*Joseph*)

Steel Pan Consultant

Joe Galvin (*Joseph*)

Accordian Consultant

Adam Bell (*Joseph*)

Movement Consultant

Rob Johansen (*The 39 Steps*)

Choreographer: Jitterbug

Melaina Muth (*The 39 Steps*)

Assistant Stage Managers

Quynn Hickey (*The 39 Steps*)

Aggy Wright (*Joseph*)

Vocal Captain

Devin McDuffy (*Joseph*)

Dance Captain

Alanna Porter (*Joseph*)

Keyboard Programming

Erik Wakar (*Joseph*)

Production Manager

Trish Hausmann

Festival Technical Director

I. Christopher Berg

Technical Director

Rachel Shearon

Props and Scenic Artist Supervisor

Dan Tracy

Scenic Charge Artist

Spencer Donovan

Props Artisans

Hannah Keeler

Spencer Lawson

Scale Model Maker

Kristen Martino

Carpenters

River Epperson

Sierra Shelton

Jacob Spencer

Changeover Crew

Sydney Coffey

Quynn Hickey

Aggy Wright

Festival Run Crew

Sam Connan

Costume Studio Supervisor

Dawnette Dryer

Cutter/Draper

Dana Tzvetkov

Wardrobe Supervisor

Brittany Staudacher

Wardrobe Crew/Stitchers

Nicole Hiemenz

Bec Pawlowski

Lighting Studio Supervisor

Betsy Smith

Lead Electrician/Programmer

Kayla Brown

Light Board Operators

Anna Lagrange (*Joseph*)

Bri Stoneburner (*The 39 Steps*)

Audio Mix Engineer

Luc Charlier

Spotlight Operators

Jeremy Clark

Judy Qiao

Sound Studio Supervisor

Andrew Hopson



*The festival scenic shell designer is a member of United Scenic Artists Local 829, IATSE.



The Production Manager is a member of the Actors' Equity Association, the Union of Professional Actors and Stage Managers in the United States.



The Festival Technical Director is a member of the International Alliance of Theatrical Stage Employees, 618 or 893.

Summer administration

IUST Producing Artistic Director

Linda Pisano

Associate Producing Artistic Directors

Reuben Lucas

Richard Roland

Business Director/

Financial Operations Manager/

Fiscal Officer

Cindi Severance

Department Dramaturg

Madison Colquette

Project Manager

Laura Judson

Company Manager

Trish Hausmann

Covid Safety Officer

Izel Landa

Audience Development Staff

Sydney Coffey

Carolynn Stouder

Director of Patron Relations, House Manager

Scott Hogsed

Assistant House Managers

Ashley Chilla

Abi Crigler

Artistic team



I. CHRISTOPHER BERG

(Festival Technical Director)

has designed numerous productions for Brown County Playhouse as well as Stantons Garage,

The Peer Panel, and *The Crucible* here at IU Bloomington. His research interests vary from lean manufacturing and its inherent nature in theatre to the use of composite materials and techniques in scenic & properties construction. An avid sailor and member of U.S. Sailing, he is also interested in the re-introduction of current marine rigging into theatrical rigging. Christopher is a member of the International Alliance of Theatrical Stage Employees, Local 618.



RACHEL ROSE BURKE

(Scenic Designer)

(she/her) recently graduated from Indiana University with her Masters of Fine Arts degree in scenic design. Recent design

credits include *Sueño*, *The Well of Horniness*, *Little Women: The Musical* (IU), *The Two Kids That Blow Shit Up* (FTC), *Bonnets: (How Ladies of Good Breeding are Induced to Murder)*, and *Tiger Beat* (IU). Awards and recognitions include an Honorable Mention in the SETC Scenic Design Competition (2022), the Richard L. Scammon Award (2021), and the Salem State University Creativity Award (2019).



MADISON COLQUETTE

(Dramaturg: Joseph)

is the Department Dramaturg for IU Theatre & Dance. She previously worked at the International Writing Program at

the University of Iowa, the oldest and largest multinational writing residency in the world, and in the Literary Office at the Eugene O'Neill Theater Center in Waterford, CT. She received her M.F.A. in Dramaturgy from the University of Iowa.



BETSY COOPRIDERS-BERNSTEIN

(Lighting Designer)

After lighting *Little Shop of Horrors* and *Little Women* for IUST in 2019, Betsy returns once again to her alma mater (M.F.A.

Lighting 1981.) Last fall, she lit *The Book Club*, marking her 43rd production with the Indiana Repertory Theatre. Contemplating the vast abyss of retirement, Betsy has started a fresh 'mission' in upcycling. Visit her shop "ReVivable Goods" on Etsy. Betsy is a member of United Scenic Artists, Local 829, and still enthralled with the magic of light.



SPENCER DONOVAN
(*Projection Designer,
Scenic Artist*)

(he/him) is a third-year scenic design graduate. His past design credits at IU include *Jump, Twelfth Night, The Servant of*

Two Masters, and *Ascendant*. Before coming to IU, he acted as resident scenic designer at Timber Lake Playhouse for their 2018 season, designing *Forever Plaid, Hounds of the Baskerville*, and *Born Yesterday*. He received his undergraduate degree from Loyola University in Chicago, where he balanced designing for the undergrad program, and acting as a scenic painter in the windy city.



ANNA FAGIN
(*Assistant Sound
Designer*)

recently graduated from IU's Jacobs School of Music, earning a Bachelor of Science in Audio Engineering and

Sound Production with a double minor in Media Persuasion and Theatre. For IU main stage sound design, *Bonnets: How Women of Good Breeding are Induced to Murder* (2020) and *Carrie: the Musical* (2022). Anna is from Carmel, Indiana.



RAY FELLMAN
(*Music Director:
Joseph*)

serves as a music director, vocal coach, and voice teacher, for Indiana University's B.F.A. in Musical Theatre Program. He

has conducted over 50 musicals off Broadway, regionally and internationally and performed in over 100 cabaret shows in major clubs in NYC and around the world. Career highlights include Stephen Schwartz's *Captain Louie* (Little Schubert Theater/National Tour), which included a performance on *The Today Show*. *Les Misérables*, *Sweeney Todd*, and

West Side Story for Teatro Nacional Sucre in Quito Ecuador directed by Chia Patiño. Regionally, the O'Neill National Music Theatre Conference, the Fulton Theatre, Maine State Music Theatre, and Indiana Repertory Theatre for *A Little Night Music* starring Sylvia McNair. Ray's cabaret work garnered him a Backstage Magazine Bistro Award in 2007 for his work as music director of *The After Party* at the Laurie Beechman Theatre on 42nd St performing with such artists as Leah Michele, Jonathan Groff, Titus Burgess, and Ariana Grande. In addition, he has performed at Feinstein's, *The Algonquin*, Jazz at Lincoln Center, BB King's, and the Duplex Cabaret Theatre in NYC. As a stage performer Ray has sung important roles with such regional opera companies as Florida Grand Opera, Glimmerglass, and New Orleans Opera, and been a featured soloist with multiple symphony orchestras including the St Louis Symphony and the Indianapolis Symphony. Voice coaching credits include the film *Ben is Back* (2018) starring Julia Roberts, HBO's *Sharp Objects* starring Amy Adams, and Twentieth Century Fox film *Joy* (2015) starring Jennifer Lawrence and Edgar Ramirez.



DJ GRAY
(*Director/
Choreographer:
Joseph*)

is a proud member of SDC as a Director/Choreographer. Working with James Lapine, she was the

Associate Choreographer with Tony Award winning *The 25th Annual Putnam County Spelling Bee*, (On and Off-Broadway, and the Non-Equity National Tour), assisted staging *Sondheim on Sondheim* (Studio 54) and *Merrily We Roll Along* (Encores!). She was the Associate Choreographer with Tony-nominated *Xanadu*, set the National Tour which opened at the La Jolla Playhouse, and lead the direction of the Tony presentation for *Xanadu* at the Radio City Music Hall. Off-Broadway, she choreographed *A Man of No Importance*, and the touring show *Masterman for Theaterworks*. She has also performed on Broadway in *The Producers* as well as in

regional and international theatres for over 25 years. DJ set the first regional production alongside William Finn of *The 25th Annual Putnam County Spelling Bee* for Barrington Stage, which also toured to North Shore theatre. Other theaters she has Directed and Choreographed include McCoy and Rigby, Candlelight Pavilion, Northern Stage, 3D Theatricals, Moonlight Stage, Sharon Playhouse, Tri-Arts, Florida Studio Theatre, and most recently choreographed *A Grand Night For Singing* at Musical Theatre West in Long Beach, CA. TV credits include the Emmy nominated "Stephen Colbert's Christmas Special", the Style Network's "Instant Beauty Pageant", Emmy award-winning *The New Electric Company*, NBC's "The Year Without a Santa Claus", and a live action TV show for the Cartoon Network. DJ received her B.A. from UC San Diego, and her M.F.A. from UC Irvine. She is certified in the GYROTONIC® method and Pilates, and is a teacher trainer for both, granting her the ability to certify new teachers in both movement specialties. DJ is a Professor of Practice at IU for the Musical Theatre B.F.A. Program.



QUYNN HICKEY
(Assistant Stage Manager: The 39 Steps/Changeover Crew)

is a 2020 IU graduate with a Bachelor's degree in Secondary English and Theatre

Education. For IU Theatre: *The Heiress* (Maria) and *Heathers* (Martha Dunstock). Other: *Wizard of Oz* (Assistant Director), *Ariadne* (Stage Crew), *The Nutcracker* (Stage Crew), and *Seven Brides for Seven Brothers* (Ruth). Quynn is from South Bend, IN.



ANDREW HOPSON
(Sound Designer)

As a composer and sound designer, Andrew has designed or written the scores for shows at such theatres as the Oregon Shakespeare

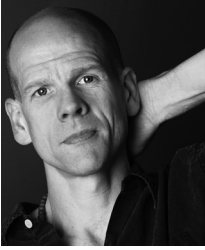
Festival, Utah Shakespearean Festival, Actors Theatre of Louisville, American Repertory Theatre, American Players Theatre, Cincinnati Playhouse, Pioneer Playhouse, Cleveland Playhouse, Victory Gardens, Harvard University, and the Indiana Repertory Theatre, where he was resident sound designer for five years. In 2004, his New York debut *Trying* was rated one of the best Off-Broadway shows of the year. In film, he has scored the documentaries, *Birth of Legends*, *The Battle of Comm Avenue*, *Hockey's Greatest Era 1942-1967*, *The Frozen Four* and *Utah's Olympic Legacy*. He has produced, engineered or performed on over 40 CDs, ranging from stories for children to collections of modern American piano works. He is a member of United Scenic Artists, local 829 and USITT.



LILY K. HOWDER
(Assistant Lighting Designer)

(she/her) is a third-year M.F.A. Lighting Designer. IU Theatre Credits: *Earthward*, *The Threepenny Opera*, *Little Women*, *Twelfth*

Night, *Sounding Bodies*. Other design credits include associate lighting designer for *Into the Woods* (Flint Repertory Theatre), lighting designer for *Scrooge!*, NMU Dance Concert, and FRT *Battle of the Bands* (Forest Roberts Theatre). Other professional experience includes freelance electrician around DFW area, light and sound apprentice at Dorset Theatre Festival, and sales associate for Barbizon Lighting Company.

**ROB JOHANSEN**

(Movement Consultant: The 39 Steps)

has been a professional actor and fight choreographer for 25 years. Most recently, Rob played

Scrooge for the first time at the Indiana Repertory Theatre. That show marked Rob's 50th time acting on the IRT stage. Rob had choreographed over 20 productions of *Romeo and Juliet* (and that's plenty!), but doing comedic choreography is Rob's true happy place. This is Rob's fifth go with *39 Steps*. He acted in three productions in one season, and he directed the show earlier this year at Wabash College. Rob graduated a loooooong time ago from IU as an Acting M.F.A., and even had the privilege of teaching here for two years. He is deeply grateful to come back for this romp!!

**REUBEN LUCAS**

(Associate Producer of Production; Designer, IUST Festival Shell)

Reuben's scenic and projection designs have been seen onstage at the Indiana Repertory Theatre,

Denver Center Theatre Company, National Theatre Conservatory, Theatre Aspen, Indiana Festival Theatre, Curious Theatre Company and others. Before Indiana University, he was a Chicago-based freelance associate scenic and exhibit designer on museum and theatre projects at various national companies. Additionally, he served as the resident scenic design associate at the Denver Center Theatre Company for four years. Reuben received his M.F.A. from University of Illinois at Urbana-Champaign and is a member of United Scenic Artists Local 829.

**JENNY MCKNIGHT**

(Director: The 39 Steps)

(she/her) is in her fifth year as Professor of Practice in Acting & Directing, and her first year as Director of Undergraduate

Studies in our department. For IU Theatre, she's directed *Bowling for Beginners*, *The Tragedy of Julius Caesar*, *Only Child*, *Little Women*, *Tiger Beat*, and *Waycross*, and she's also served as Intimacy Choreographer and Consultant for more than 25 departmental productions. Regionally, Jenny has directed *Measure for Measure* at Illinois Shakespeare Festival, *Leipzig* at Jewish Theatre of Bloomington and *The Lion, the Witch and the Wardrobe* at Cardinal Stage. A proud union member of both Actors' Equity Association and Stage Directors & Choreographers Society, Jenny enjoyed opportunities to perform at Chicago-area and regional theatres including The Goodman Theatre, Steppenwolf Theatre, Victory Gardens, Northlight Theatre, Remy Bumppo, Actors Theatre of Louisville, Indiana Repertory, Milwaukee Repertory, Kansas City Repertory, Clarence Brown Theatre, and Arizona Theatre Company, among many others.

**CHRIS MILLS**

(Dramaturg: The 39 Steps)

taught for 10 years at NYU's Drama Department and was the long-term resident dramaturg for Theater Mitu. She was

also dramaturg for Little Lord, Lucky Pierre, 24seven PlayLab & Young Playwrights in NYC. She's made theater with the Public Theater, Big Mess Theater, Chicago Shakespeare, Stage Left Theater & others. At IU, she's worked on *Uncle Play*, *The Well of Horniness*, *The Threepenny Opera*, and *Closer than Ever*. Mills has been published in peer-reviewed journals & books and was Global Content Strategist at UNICEF. She is a Dramaturgy M.F.A. candidate.

**LINA ANN MILLSAP**

(*Stage Manager: The 39 Steps*)

(she/her) is a recent graduate of Indiana University, earning her Master of Arts in Arts Administration. Lina is a Summa

Cum Laude graduate of Bowling Green State University, majoring in Technical Theatre. She is excited to be working on a production at IUST. Most recently, Lina has served as the Stage Manager for *Ada and the Engine* at Cardinal Stage, and as the Stage Manager for *Just Between the All of Us* at Bloomington Playwrights Project. Lina is from Cleveland, OH.

**MELAINA MUTH**

(*Choreographer: The 39 Steps*)

is from Brookfield IL, and is currently a sophomore at Indiana University and is studying contemporary dance.

Before coming to IU, she trained at the Joffrey Academy in Chicago and Principle Dance. She also attended the Alvin Ailey Summer Intensive in 2019. She has been dancing for sixteen years and studied various styles of dance including: ballet, contemporary, hip hop, and jazz. Melaina has performed in the contemporary dance program's 2021 production of the *Junior Choreographic Performance Project* and the most recent Senior Capstone Show: *New Moves (2022)*. She has also arranged music for Robert Burden's house class and his piece "House of Love" that premiered at the 2022 *New Moves* production. She is involved in student-run organizations here at IU such as the Ballroom Dance Club and the Di:verse Dance Crew. Post-college she plans on pursuing a career in choreography and dance film.

**JASON ORLENKO**

(*Costume Designer: Joseph, Festival Wig Designer*)

is on faculty as the Visiting Assistant Professor of Costume Design. Regional design credits include

the Milwaukee Rep, Rep of St. Louis, Skylight Music Theatre, Renaissance Theaterworks, Next Act Theatre, Milwaukee Chamber Theatre, Forward Theatre, Cardinal Stage, First Stage Children's Theatre. Assistant design credits include American Players Theatre and Illinois Shakespeare Theatre.

**LINDA PISANO**

(*Producing Artistic Director*)

was appointed Chairperson for IU Theatre & Dance in July 2018. She formerly headed the M.F.A. Costume

Design program and was head of the Design & Technology Area. She has directed the Theatre and Drama department's Study Abroad Program in London since 2004. Linda has served on the faculties of Iowa State University and Kenyon College. A member of the United Scenic Artists Local 829, Linda's work has covered a broad range of theatre, dance, musical theatre, ballet and opera and has been featured on stages throughout the United States, Canada, and the UK. Her work has been featured in the Quadrennial World Design Expo in Prague, the Bakhrushin Museum in Moscow, the China Institute of Stage Design in Beijing, and the World Stage Design exhibition in Taipei and Toronto. She is a four-time winner of the Peggy Ezekiel Award for Excellence in Design, a three-time jury winner in the National Design Expo, and a two-time recipient of the Kennedy Center/ACTF Meritorious Achievement in Costume Design Award. Her work has been called "stunning...mesmerizing...powerful," and "a remarkable contemporary dance display."



RICHARD ROLAND
(Associate Producer of Casting)

This marks Richard's fourth season with IUST for which he has directed *The 25th Annual Putnam County Spelling Bee*,

Little Shop of Horrors, and the radio drama *Twisted Tales of Poe* in conjunction with WFIU. Other IU shows include *City of Angels*, *Wonderful Town*, *Big Fish*, *Lonely Planet*, and the upcoming *Natasha, Pierre, and the Great Comet of 1812* this fall. This summer he also directs *She Loves Me* at the New London Barn Playhouse in New Hampshire, and he will direct *Elf: the Musical* for Constellation Stage and Screen this winter. Having worked as a director both nationally and internationally, his credits include *God of Carnage*, *Thoroughly Modern Millie*, *Chicago*, *Hairspray*, *Ragtime*, *The 39 Steps*, *Steel Magnolias*, *Souvenir*, *Barefoot in the Park*, *110 in the Shade*, *Avenue Q*, *Urinetown*, *No Way to Treat a Lady*, *Dear Ruth*, *The Story of My Life*, *Carousel*, among others. As an actor, he appeared on Broadway, off-Broadway, television, and in National Tours and regional theatre all over the place. B.F.A. in Theatre Performance (Denison University), M.F.A. in Directing (Penn State). Originally from NY, NY, he now calls Bloomington home, where he is the Director of the B.F.A. in Musical Theatre program. Proud member of SDC, AEA, and SAG/AFTRA.



RACHEL SHEARON
(Technical Director)
(she/her) is a second-year M.F.A. Theatre Technology student. For IU Theatre, she was the Technical Director for *Bowling for Beginners* and *Uncle*

Play. She was also the Assistant Technical Director for *The Threepenny Opera*. She graduated with a B.F.A. in Theatre Design and Technical Production from Western Michigan University where she was the Technical Director for *Tribes*, *Viscera Exposed* (a student devised piece), and the Assistant Technical Director for *The Lady in Question*.



ERIKO TERAQ
(Costume Designer: The 39 Steps)

is a costume designer and technician. Originally from Japan, Eriko has worked internationally in the US, Japan, the UK,

and Ireland, serving as a costume designer, assistant designer, coordinator, wardrobe supervisor, and technician in a variety of theatrical productions, concerts, and costume exhibitions. Prior to joining Indiana University Bloomington, she served as the Costume Studio Manager/Lecturer for the University of Central Arkansas and Arkansas Shakespeare Theatre. Past costume experience includes work with Santa Fe Opera, Utah Shakespeare Festival, American Players Theatre, Children's Theatre of Madison, Williams College Theatre Department, Ally Theatre, the Jacobs School of Music Opera & Ballet Theater, Imperial Theatre, Nissei Theatre, and Akasaka ACT Theatre.



DANIEL TRACY
(*Props and Scenic Artist Supervisor*)

joined the Department of Theatre, Drama, and Contemporary Dance at Indiana University in the fall of 2013 as Prop Master and Scenic

Artist Supervisor. He received his M.F.A. in scenic design from Indiana University where he designed sets for *Sunday in the Park with George*. For IU Theatre: *Spring Awakening*, *In the Next Room or the vibrator play*, and *The Pillowman*. Additionally, Dan has worked as props artisan for Actors Theatre of Louisville, Seaside Music Theater, and New Harmony Theater. He was assistant prop master and teacher at the University of Michigan. Dan has also done event design and management for Andretti Autosports, Delta Faucet, Indy Racing League, NFL players association, and Rolls Royce. Dan continues to design professionally, having recently worked on projects for Phoenix Theatre and Civic Theatre of Indianapolis.



DANA TZVETKOV
(*Cutter/Draper*)

designs and constructs costumes for opera ballet and theater. Her work has been featured in the Central City Opera's *Tosca* (2016) and

Carmen (2017), as well as the National Opera Association's *Hagar* (2016). Her designs have appeared on Indiana University's Musical Arts Center stage in *Saudade*, *Carmen*, and *Peter Grimes*. She has designed rentals for Ball State Opera Theater, Mississippi Opera, DePauw University, and Butler University. She worked alongside Linda Pisano for Opera San Antonio to build costumes for a cast including Patricia Racette and Michelle DeYoung. She has been commissioned to create concert gowns for DeYoung and Sylvia McNair. Tzvetkov served as the costume shop supervisor for IU Opera and Ballet Theater from 2013 until recently, when she was promoted to shop manager. She returned

to Central City Opera in summer of 2018 to coordinate its production of *Il Trovatore*.



CONNOR VINCEK
(*Stage Manager: Joseph*)

(he/him) is an incoming Senior majoring in Arts Management and minoring in Theatre. Connor served as

the stage manager for *Jump*, *Bowling for Beginners*, and will be stage managing *Natasha*, *Pierre*, and *the Great Comet of 1812* and *Something Rotten!* for IU Theatre. Connor works as a carpenter and electrician for Constellation Stage and Screen, previously known as Cardinal Stage Company. Connor is from Newburgh, IN, and will one day work in themed entertainment and/or touring theatre.



AGGY WRIGHT
(*Assistant Stage Manager: Joseph/Changeover Crew*)

(she/her) is a second-year B.A. student for costume design/stage management. She is from South Bend, IN,

and plans to go into stage management when she graduates. *Joseph* is the first production she's worked on, and she is extremely excited to have the chance to participate in IUST!

One World at

Woolery MILL

with One World Catering



up to 500 guests
free parking
industrial chic
additional amenities

oneworldatwoolery.com

(812) 334-3663

catering@bloomington.com

one
world
Catering



catering for all occasions
available at your venue or Woolery Mill

oneworldcaters.com

(812) 334-3663

catering@bloomington.com

IU Summer Theatre Fund contributions

Charles and Katherine Aiken
Diana and Rodger Alexander
Carroll P. Britch
William K. Castellan and Angela D. Huxford
Samuel Davis
Christopher and Claire Dippel
David and Susanna Fennema
Danita and Robert Forgey
Jacqueline and William Gilkey
Margaret Goergen-Rood and Vernon Rood
Jennifer and Laurence Gordon
Audrey and Kenneth Heller
Steven L. Hendricks
Carter and Kathleen Henrich
Mariann E. Hosler
John and Susan Cronkhite
Robert and Sandra Kleymeyer
Ronald Kovener
Harlan Lewis and Doris Wittenburg
Sandra Schultz Moberly and Stephen Moberly
Cyndi and Dale Nelson
Carol and Wade Peacock
Joyce and Philip Probst
Richard J. Rose
August and Virginia Semenick
Curtis and Judith Simic
Erdine M. Simic
David Smith* and Lucy Smith
George and Patricia Smith
T. Joe Tower
Steven and Susan Waggoner
Terry and Sharon Williams

**The hiring and casting of festival guest artists
and consultants is made possible by the Lee
and Deb Norvelle Visitors Fund**

* Denotes donors who have passed away, but whose gift continues to benefit the department and its students.

IU Theatre & Dance supporter contributions

CONTEMPORARY DANCE FUND CONTRIBUTORS

Lillian R. Feldman-Hill
Jennifer L. Gray and Alan S.
Bradley
Deborah C. Galvin
Robert J. Hamm Jr. and Gwendolyn A. Hamm
Joy C. Johnson and Jerry L.
Johnson J.D.
Allen Hahn and Karen Keagle
George and Mary Korinek
Rose M. Krueger
Laura Judson and Nikolaus Miller
Harlan Lewis and Doris
Wittenburg
Meghan McGill
Miah and Jonathan Michaelson
Elizabeth Jo Monnier
Dennis W and Lynette A. Organ
Linda Pisano
Susan B. Glenn-Salerno and
Richard P. Salerno
Mary Strow
Sheila A. Ward, Ph.D.

JANE FOX FUND CONTRIBUTORS

Jane Fox
Catharine and Thomas Buck
Jacqueline and Stephen Frew
Gwendolyn and Robert Hamm Jr.
Rose Marie Krueger
Christina Strack

TED JONES STUDENT TRAVEL FUND CONTRIBUTORS

Katherine M. Aiken and Charles
C. Aiken
Louray G. Cain
Lauren Hausmann
Marianne Hausmann and William
Hausmann
Ted W. Jones
Jane Pennell McIntosh
Amy N. Osajima
Eleanor Owicki
Lea Plut-Pregelj and Vladimir N.
Pregelj
Doris F. Wittenburg and
Harlan L. Lewis

THEATRE & DRAMA FUND CONTRIBUTORS

Rita Murray Anderson and Robert D. Anderson
Nancy Baird
Thomas M. Baydala
Gregory G. Bernet
Judith Biersdorfer
Josiah A. Brown
Joan M. Capella
Hoagy B. Carmichael
Walter D. Carroll
Ashley M. Chilla
Wendy W. and Thomas P. Collins
Allison C. Conrad and Donald W.
Conrad
Mary and Sheldon Cooper
Georgia R. and Mark K. de Araujo
Kimberlee M. Demers and Alan
Demers
Diane T. Dickinson Patrick
Claire and Christopher Dippel
Gresdina A. Doty, Ph.D.
Sean M. Dumm
Jacqueline and Richard Dunham
Harriet and William Fierman
Elizabeth and Steve Hass-Hill
Thomas V. Hinshaw
Scott Hogsed
Todd and Lynn Honderd
Elizabeth and David Ihlenfeld
Laura Judson and Nikolaus Miller
Joe D. King
Douglas and Kay Long
Linda A. Longhover
The Honorable P.A. Mack, Jr.
Tom Mazur
Richard and Terry McCall
Laura K. McClellan
Marvin D. Moody, Ph.D.
Lawrence Myers, Jr. and Clair A. Myers-Usiatynski
Cyndi and Dale Nelson
Christina D. Ondrik
Robert R. Ormiston
Rhoda and C.K. Peters
Linda Pisano
Phil and Joyce Probst
David L. Rinear
Donna Snow Robinson
Corey Rosenberg
Wendy Rubin
Curtis and Judith Simic
Lynne Perkins Socey and Matthew Socey
Diane J. Spoffard
Janice and Walter Stewart
R. Brent Wagner
June E. Weiland
Doris Wittenburg and Harlan Lewis
Sharon L. and D. Terry Williams
Donna and Richard Wolf
Jo A. Zirkle

* Denotes donors who have passed away, but whose gift continues to benefit the department and its students.

Department awards, fellowships, scholarships, and endowments

Bright Family Theatre, Drama, and Contemporary Dance Fund

Anne and Jim Bright

Catherine Feltus Preston Scholarship

Catherine Preston Trust
Charles R. Leinenweber

Charles Aidman Spoon River Fellowship

Betty Aidman
Charles Ogilvie Jr.

Colleen J. and W. Keith Alexander Scholarship

W. Keith Alexander

Cynthia Dewees Nelson and Dale C. Nelson Musical Theatre Scholarship

Cyndi and Dale Nelson

David S. Hawes Award

Betty Anne Hawes

Donnelly-Brown Fund for Theatre & Drama

Benita Gail Brown
Brian Thomas Donnelly

Dr. James F. Elrod Scholarship in Theatre & Drama

James F. Elrod

Featheringill Theatre and Drama Scholarship

Jack L. Featheringill

Fontaine Syer Directing Fellowship in Theatre

Susan Greenberg
Mary K. Nash Rusher
Henry Woronicz

Foster Harmon Graduate Fellowship in Theatre

L. Foster Harmon

Foster Harmon Undergraduate Scholarship in Theatre

L. Foster Harmon

Frank and Becky Hrisomalos Scholarship in Theatre & Drama

Becky Hrisomalos
Katy Bigge Kestner Fund
Richard and Alicia Lytle

George Pinney Musical Theatre Scholarship

Anne and Jim Bright
Paul Goldberg
P.A. Mack
Jerry and Lucy McIntosh
Marilyn Norris
Ilene and John Reid

Harlan L. Lewis Family Scholarship

Harlan L. Lewis and Doris F. Wittenburg

Harv and Connie Hegarty Theatre and Drama Production Fund

Harv and Connie Hegarty

Helen Sarah Walker Scholarship

Michael L. Walker
Baker Hughes Foundation
Cory and Margaret Baumhardt
Irwin and Lois Jacobs

Howard Jensen Endowment

Howard J. Jensen, Ph.D.

Jay Mark Scholarship in Theatre & Drama

Alvin Goldstein

Joyce and Jim Grandorf Theatre, Drama, and Contemporary Dance Fund

Joyce and Jim Grandorf

Katy Bigge Kestner Fund

Elmer N. Kestner, III

Kimberly S. Hinton Memorial Scholarship in Contemporary Dance

Bridget Balint
Jennifer Gray and Alan Bradley
Madison Colquette
Angela Gast
Lois and Richard Gast
Nancy Gray McKelvey and Raymond McKelvey
Suzanne and Keith Hinton
Steven Jarosz
Laura and Nikolaus Miller
Reuben Lucas
Eleanor Owicki
Amanda and William Peterson

Linda Pisano
Bret Popper
Karyn Rahn and Bradley
Strode
Cat Richards
Elizabeth and John Shea
Jamie and Jonathan Stuckey

Lee and Deb Norvelle Fund
Lee Norvelle, Ph.D., LL.D

**Lora C. Shiner Memorial
Scholarship**
Lora Shiner Foundation

**Nota Scholl McGreevey
Scholarship**
John and Nota McGreevey

**Ralph Collins Memorial
Lectureship**
David Collins
Dorothy Craig Collins
Wayne Craig

**Richard L. Scammon
Award**
Bryce Broughton
Barbara Lockard-
Zimmerman

**Robert Preston
Scholarship**
Catherine Preston Trust
Charles R. Leinenweber

**Rosemary R. Schwartzel
Scholarship**
Patricia J. Redens Wrege

**Suzanne M. Collins
and Charles A. Pryor
Scholarship**
Suzanne M. Collins and
Charles A. Pryor

**Theatre Circle Scholar
Award**
Members of Theatre Circle

**Theresa Anne Walker
Scholarship**
Michael L. Walker

Fran Snugg Endowment
Marianne and Charles E.
Snugg
Gertrude and Seymour
Alberts
Anita Aldrich Ed.D.
Anitra Bareikis
Patricia E. Biddinger
Emily Ann Bogard
Leon and Roberta Brauner
James P. Burling II
Robert E. Burton
Marcia M. Busch-Jones
Jean E. Campbell
Ann M. K. and Thomas R.
Carter Ph.D.
Orchard Close
Evelyn A. Davies Ed.D.
Deborah A. Freund Ph.D.
Robert L. Gluckstern
Janet Hamburg
Patricia Dain Haskell
William H. Hays III
Robin Herrington-Bowen
Rachel and David M. Hertz
Jo An Huff
Peter P. Jacobi
Thomas J. Kniesner Ph.D.
Rachel Lampert
Bernice A. Pescosolido
Louise Rebecca Rarick
Nancy and James W. Reeves
Edward and Sydney Regan
Robert and Sandra Reiberg
Carlos Rodriguez
Geneva B. Scriggins
Evelyn S. Turner
Allison and Thomas Walsh
Byron P. Wheeler
Mark F. Wheeler and Jan
Wheeler Ph.D.

Jason W. Stradtman Prize
Alan Airth
Byron and Kimberly Antillon
Johnston Atoll
Dawn and Paul Barrera
Ali and Robert Bartholomew
Darlene Bishop
Donna Colwell
Bruce Creamer
Donald and Patricia Crounse
Kathleen Galindo
Adelita Garza
Arlene and Martin Glassman
Diane and Frederic Hite
Lucena A. Hocking
Denis and Robin LaBonge
Anthony and Karin Lekas
Dick and Karen Lemen
Gael and Glenn Libby
Fred and Peggy Lynn
Judith and William Maisel
Sharon Merz
Marybeth and Robert
Michel
Susan Moore
Elaine Peterson
Robert Radus
Joanne and Paul Reynolds
Martha and Robert Santos
Sharon Seymour
Martin and Charlotte
Stradtman
Dennis and Sharon Tase
Howard and Joan Thompson
Catherine and William
Titterud
Andrew and Rena Wellman
Lynda Wicks
Audrey and Robert Windsor

Theatre Circle

Theatre Circle was founded in 1978 to encourage the study and practice of theatre arts at IU and to promote an awareness of IU Theatre throughout the community. Theatre Circle members enjoy a variety of benefits, including

acknowledgment in all IU Theatre programs; emailed information about all performances; glimpses behind the scenes; exclusive talks by directors, designers, and theatre scholars; special event invitations; and much more.

SUSTAINING BENEFACTORS

(Gifts of \$5,000 and above)

Benita Brown and Brian Donnelly
Jean* and Doris Creek
Connie and Harv Hegarty
Becky and Frank* Hrisomalos
The Lawrence W. Inlow Foundation
Carl F. Kiehler
Sara* and Bob LeBien
Marion Bankert Michael and
R. Keith Michael
Dr. Howard Polley
Reva* and Jack Shiner
Mr. and Mrs. Kenneth W. Sparks
Bruce and Shannon Storm - In
Honor of George Pinney
Bruce and Shannon Storm - In
Honor of Tiffany Storm Ericson
Margaret and William Yarber

ANNUAL GIVING July 1 2021–June 30 2022

ASSOCIATE PRODUCERS (\$2,500)

Diana and Rodger Alexander -
At First Sight
Cyndi and Dale Nelson -
Carrie: The Musical
Harv and Connie Hegarty
Harlan Lewis and Doris
Wittenburg - *At First Sight*

PARTNER ASSOCIATE PRODUCERS (\$1,250)

Anne and Jim Bright - *At First Sight*
Kathryn and Barry Brown -
Carrie: The Musical
Phil Evans and Herbert O. Kuebler
partnered with
Judy Schroeder - *The Threepenny
Opera*
Jo Ellen and Steve Ham -
The Threepenny Opera
Harlan Lewis and Doris Wittenburg
- *The Threepenny Opera*
Harlan Lewis and Doris
Wittenburg - *Earthward*

EAGERLY PARTNERED ASSOCIATE PRODUCERS (four households together at \$1250)

Ashley and Mark Chilla
Carolyn and Dave Emmert
Marlin G. Howard
Angela Huxford and Liam Castellan
Sueño

BENEFACTOR (\$1,000 and above)

Diana and Rodger Alexander
Teresa and John Ayres
Anne and Jim Bright
Kathryn and Barry Brown
Julie A. and Cary K. Curry
Carolyn and Dave Emmert
Phil Evans and Herbert Kuebler
Jacqueline and James Faris
Jacqueline and William Gilkey
Jo Ellen and Steve Ham
Cyndi and Dale Nelson
Harlan Lewis and Doris
Wittenburg
Judy Schroeder
Paula W. Sunderman

PATRON (\$500 –\$999)

Ruth Albright
Deborah Burkhardt and Earl F.
Luetzelschwab
Jean Creek* and Doris Shoultz-
Creek
Jo E. and George L. Fielding
Sandra and Don Freund
Michael Gleeson
Howard D. Mehlinger
Idalene Kesner and Paul Robins
Kate Kroll
Laura C. Trout

SPONSOR (\$250–\$499)

Bloomington Thrift Shop
Douglas and Hilary Anderson
Cathleen M. Cameron
Ashley and Mark Chilla
Sandra B. Churchill
Marlin G. Howard
Angela Huxford and Liam Castellan
Judith Mahy-Shiffrin and Richard
M. Shiffrin
Sherry and Dale McFadden

Maribeth and Richard McKaig
Joanne Passet and Deborah
Wehman
Katherine and Travis Paulin
George Pinney and Scott Jones
Elizabeth C. Raff
Stanley Ritchie
Richard Rose
Phyllis C. Schwitzer
Erdine M. Simic
Sue Sgambelluri
Alan and Kathryn Somers
Jeffrey and Michelle Stuckey
Young Ae and J. Timothy Tresslar
Patricia and William Wheeler
Andrea White and Brad Schiesser
Donna and Richard Wolf

CONTRIBUTOR (\$100–\$249)

Terry Baer
Joan H. Caulton and Edwin H.
Greenebaum
Pamela J. and Jeffrey L. Davidson
Cheryl A. Engber
Ferguson Law
Darla Brown and Michael Hunt
Samuel Davis
Anne T. Fraker
Michael Gleeson
Linda Gregory
John D. Hobson
Iris F. Kiesling
Ronald Kovener
Julia and Fred Land
Carolyn M. Lipson-Walker and
George L. Walker
Nancy G. Martin
James L. McLay
Gerry Miller
Patricia W. Mulholland
Denise and Harold Ogren
Carol Pierce
Linda Pisano
Lislott and John Richardson
F. Wayne Roberts, Jr.
Donna Snow Robinson
Marilyn F. Saum
Kathleen A. Sidel
Lynne Perkins and Matthew Socey
Barbara J. Suthers
Susan and Steven Waggoner
Judy Walcoff
Judith B. Wertheim
Mary Wennerstrom Phillips

* Denotes donors who have passed away, but whose gift continues to benefit the department and its students.

DONOR (up to \$100)

Elaine and Philip Amerson
Ernest Bernhardt-Kabisch
Amy M. Briseño
Joan M. Capella
Susan E. and John I. Cronkhite
John C. Custer
Shirley A. Fitzgibbons
Bruce L. Jaffee
Barbara W. Jorck
Priscilla Osovski and William A.
Manwaring
Kathryn A. Oyer
Michael D. Scott
Patricia and Peter Smith
N.J. Stanley
Gene and Ellen Stern
Judith B. Wertheim
Kelli and Anthony Zabel

HONORARY LIFETIME MEMBERS

Harv and Connie Hegarty
John Kinzer
Marion Bankert Michael and R.
Keith Michael
Marilyn Norris
Susan Parrish and Thomas P.
Shafer

MEMORIALS

David Albright
Eleanor Auer
J. Jeffery Auer
Richard C. Burke
Ledford and Julia Carter
Nelda Christ
Dorothy (Dottie) Collins
Don Cook
Carolyn Kovener
Donna Creek
Cyril M. Franks
Charles and Adele Gallus
Martha and Victor Harnack
Sandra L. Hertling
Frank Hrisomalos
Howard Jensen
Harold Watling Jordan
Lambert and Elizabeth Kiehler
Sara LeBien
Nita Levison
Jeanette Calkins Marchant
Rosemary Miller
Leonard M. Phillips
Robert L. Shettleroe
Reva Shiner
Coleen Stanley
Fontaine Syer
Grafton Trout
Herman B Wells
Albert Wertheim
Nathan and Pamela Zael
Paul N. Zietlow

THEATRE CIRCLE BOARD 2022-2023

President

Liam Castellan

Vice President

Brad Schiesser

Treasurer

Marlin Howard

Members

Pam Davidson
Sandy Hall
Dale McFadden
Cyndi Nelson
Eric Shelley
Shannon O'Connor-Starks

EX OFFICIO:

Ashley Chilla
Laura Judson
Linda Pisano
Sue Sgambelluri

2021-22 SEASON ASSOCIATE PRODUCERS

Diana and Rodger Alexander
Harv and Connie Hegarty
Doris Wittenburg and Harlan Lewis
Cyndi and Dale Nelson

2021-22 SEASON PARTNER LEVEL ASSOCIATE PRODUCERS

Anne and Jim Bright
Kathryn and Barry Brown
Phil Evans and Herbert Kuebler,
partnered with Judy Schroeder
Jo Ellen and Steve Ham
Doris Wittenburg and Harlan Lewis

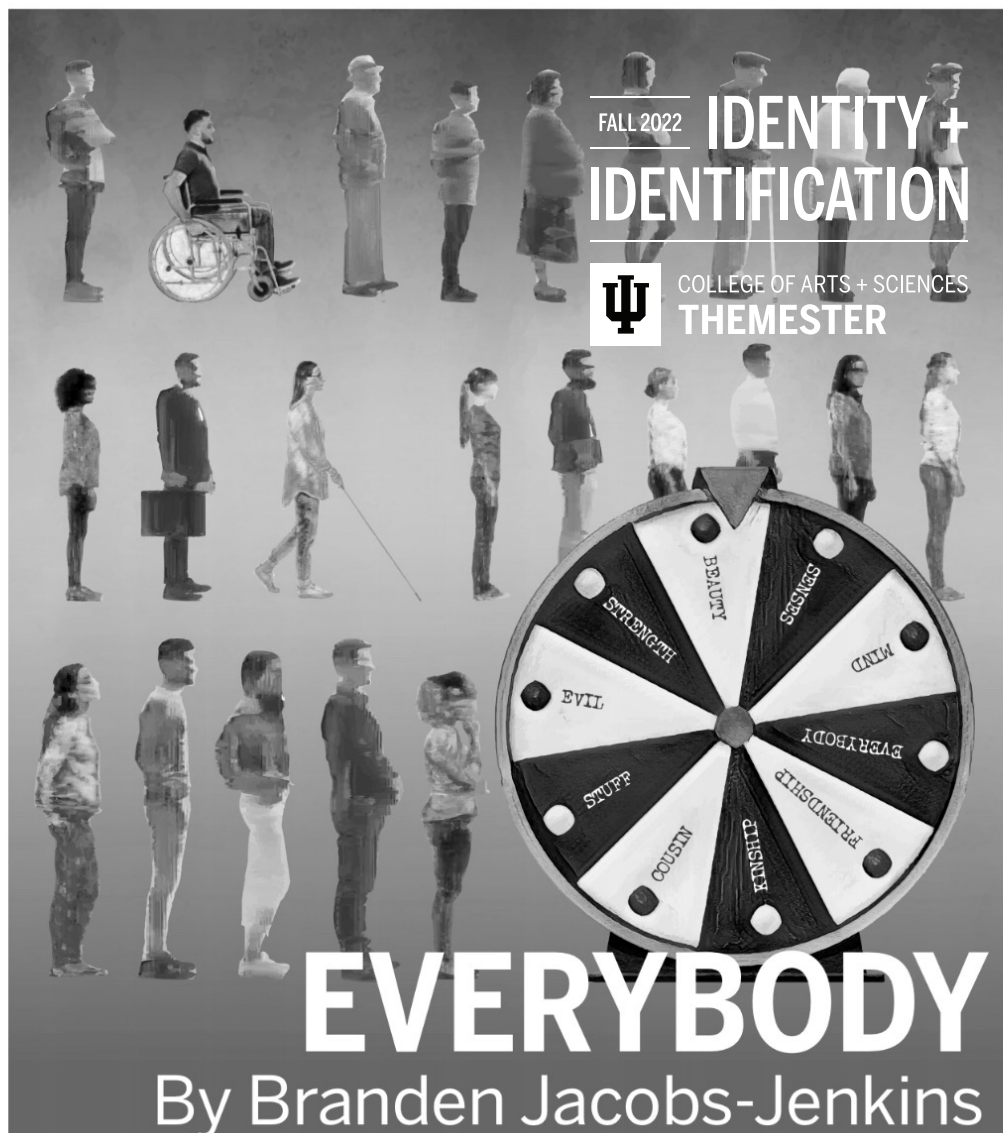
2021-22 SEASON EAGERLY PARTNERED ASSOCIATE PRODUCERS

Ashley and Mark Chilla
Carolyn and Dave Emmert
Marlin Howard
Angela Huxford and Liam Castellan

Special thanks to our 2021–2022 season associate producers

The contributions of associate producers directly fund an IU Theatre production of the donor's choice. As an associate producer, you will help directly support the cost of a production's costume, scenic, lighting, sound, and projection design. Your name will be featured in our programs and all curtain speeches. You will also enjoy benefits as year-round members of Theatre Circle, an organization founded to promote and encourage the study and practice of theatre arts in the Department of Theatre, Drama, and Contemporary Dance and an awareness of theatre throughout the community.

For more information, please pick up a Theatre Circle brochure in the lobby or contact Laura Judson at ljjudson@iu.edu or by phone at 812-855-7699; or visit the Department of Theatre, Drama, and Contemporary Dance website at theatre.indiana.edu and select the Theatre Circle link.



This modern riff on the fifteenth-century morality play *Everyman* follows Everybody (chosen from amongst the cast by lottery at each performance) as they journey through life's greatest mystery—the meaning of living.

SEPT 30–OCT 1

7:30 PM

OCT 4–8

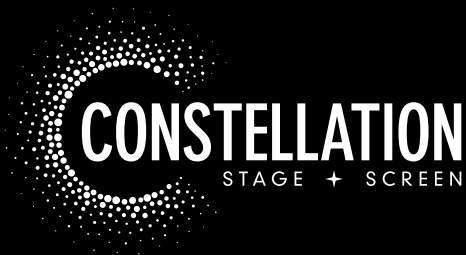
7:30 PM

OCT 8

2:00 PM

DIRECTED BY LAUREN DIESCH

WELLS-METZ THEATRE



INAUGURAL SEASON

2022 - 2023

Season Ticket Packages on sale now!

SeeConstellation.org | 812.336.9300

THE GROWN-UPS
BY SKYLAR FOX AND SIMON HENRIQUES

Sept 14 - Oct 1

THE IMPORTANCE OF BEING EARNEST
BY OSCAR WILDE

Oct 13 - 30

elf
The Musical

Dec 15 - 31

Deathtrap
by Ira Levin

Jan 26 - Feb 12

AMERICAN FAST
BY KAREEM FAHMY

Mar 23 - Apr 8

the MOON and the SEA
Book by DOUGLAS LYONS
Concept & songs by CREIGHTON IRONS

June 8 - 25

CONSTELLATION
FOR KIDS

Anne of Green Gables
by Catherine Bush

Nov 10 - 27

DON'T LET THE PIGEON DRIVE THE BUS!
THE MUSICAL!

Art © Mo Willems
Apr 28 - May 14

Learn more & subscribe at SeeConstellation.org

Proud sponsor of
IU Theatre + Dance

MOTHER BEAR'S PIZZA



Bloomington, Indiana

Now TWO locations to serve you!

Campus

1428 E Third

812-332-4495

West

**2980 Whitehall Crossing
(in front of Kohl's)**

812-287-7366

motherbearspizza.com



THEATRE & DANCE

EVERYBODY

SEP 30–OCT 8

**GROSS INDECENCY:
THE THREE TRIALS OF OSCAR WILDE**

OCT 21–29

**NATASHA, PIERRE,
& THE GREAT COMET OF 1812**

NOV 3–12

**JOURNEYS OF JOY:
WINTER DANCE CONCERT**

DEC 9–10

**AGAMEMNON:
FROM AESCHYLUS' THE ORESTEIA**

JAN 27–FEB 4

THE WINTER'S TALE

FEB 17–25

**AT FIRST SIGHT:
A FESTIVAL OF NEW PLAYS**

MAR 13–16

SOMETHING ROTTEN!

APR 14–22

**NEW MOVES/
NEW DIRECTIONS:
2023 SENIOR CAPSTONE PROJECTS**

APR 27–29

2022/2023 SEASON

Live performance, living impact

theatre.indiana.edu